

**1st Quarter Crime Report
January-March 2011**



**Fort Worth Police Department
Chief Jeffrey W. Halstead**

TABLE OF CONTENTS

<u>SECTION I. UNDERSTANDING CRIME REPORTING</u>	<u>3</u>
1.1 NATIONAL PERSPECTIVE ON REPORTING CRIME	4
1.2 FORT WORTH'S CRIME REPORT	4
1.3 UNDERSTANDING NIBRS FIGURES	5
1.4 SIGNIFICANT METHODOLOGY AND DEFINITION DIFFERENCES	5
<u>SECTION II. NATIONAL INCIDENT BASED REPORTING SYSTEM</u>	<u>6</u>
2.1 1ST QUARTER 2011 CITYWIDE NIBRS CRIME REPORT	7
2.2 1ST QUARTER 2011 CITYWIDE NIBRS CRIME RATE	8
2.3 CRIMES AGAINST PERSON (NIBRS—GROUP "A")	9
2.4 CRIMES AGAINST PROPERTY (NIBRS—GROUP "A")	11
2.5 CRIMES AGAINST SOCIETY (NIBRS—GROUP "A")	12
2.6 OTHER OFFENSES (NIBRS—GROUP "B")	13
2.7 GANG UNIT REPORT	14
2.8 OFFENSES BY COUNCIL DISTRICT	16
<u>SECTION III. UNIFORM CRIME REPORTING (UCR) TRADITIONAL SUMMARY REPORT...</u>	<u>26</u>
3.1 1ST QUARTER 2011 UCR TRADITIONAL SUMMARY REPORT	27
<u>SECTION IV. DEPARTMENT INITIATIVES UPDATE</u>	<u>28</u>

DISCLAIMER:

This report provides a snapshot of the Fort Worth Police Department's National Incident-Based Reporting System (NIBRS) data that was queried from the Records Management System (RMS) on April 18, 2011. The Department's RMS is updated regularly based on ongoing investigations, but a snapshot of this data is taken at the point that the Texas Department of Public Safety has reviewed and certified the data so that the Fort Worth Police Department has the ability to provide more detailed data, including information at the Council District level. It should be noted that since this is a snapshot, data queried before or after this date is apt to change and may vary from other reports.

Section I.

Understanding Crime Reporting

1.1 National Perspective on Reporting Crime: Transitioning from Uniform Crime Reporting to National Incident-Based Reporting System

According to the National Incident-Based Reporting System, Volume 1: Data Collection Guidelines, by the U.S. Department of Justice,

“Since the establishment of the Uniform Crime Reporting (UCR) Program in 1930, the volume, diversity, and complexity of crime steadily increased while the UCR Program remained virtually unchanged. Recognizing the need to address crime’s growing challenge, the law enforcement community in the late 1970s called for a thorough study of the UCR Program with the objective of revising the Program to meet law enforcement’s needs into the twenty-first century. The National Incident-Based Reporting System (NIBRS) is the result of that study.”

The FBI began accepting NIBRS data from a handful of agencies in January 1989. As more contributing law enforcement agencies become more knowledgeable about the rich data available through incident-based reporting and as resources permit, more agencies are implementing the NIBRS. Although participation in NIBRS is purely voluntary, based on 2009 data submissions, approximately 44 percent of reporting agencies throughout the nation are NIBRS certified. Until an agency is ready to participate and subsequently becomes certified, it will continue to submit data in accordance with the requirements of the traditional UCR Program. As it is recognized that the transition from the old to the new system will take considerable time, the national UCR Program will continue to collect, process, and publish traditional UCR data. This will be accomplished by collecting data in the old format from agencies not participating in NIBRS and by extracting the traditional summary data from the more comprehensive submissions of agencies participating in NIBRS.

The result will be a continuation of the traditional statistical time series and a gradual phase-in of the newer forms of statistics made possible by NIBRS. This parallel operation of the old and new systems will continue until such time as it is determined that the old system can be discontinued.

1.2 Fort Worth’s Crime Report

Fort Worth understands the importance of collecting and reporting more detailed, accurate, and meaningful incident-based data, and so in January 2006, Fort Worth became certified to participate in the National Incident Based Reporting System (NIBRS) and began reporting NIBRS data to the Texas Department of Public Safety. With the use of the NIBRS, the Fort Worth Police Department now has the capability to generate reports reflecting a multitude of interrelationships among the collected data—enhancing its ability to analyze crime trends and to implement tactical strategies accordingly. NIBRS data is of great value to the City of Fort Worth!

As stated above, in 2009, approximately 44 percent of the reporting agencies throughout the nation were NIBRS certified, and more and more agencies are transitioning to NIBRS. In the meantime, the FBI will continue to report UCR data (by extracting UCR data from NIBRS data) until such time the Uniform Crime Reporting can be discontinued. FBI data is used to identify national and regional crime trends. And although the FBI does not recommend using its data for ranking purposes, it is often used for rankings and at this time is often considered the best available information to compare crime from one jurisdiction to another. Since UCR data is available for all reporting agencies nationwide, it also has value for comparison purposes.

Since one of Fort Worth’s Strategic Goals is to become one of the nation’s safest major cities, the FBI data, along with other third party rankings, are used to determine if we are making progress towards this goal/vision. Therefore, the Fort Worth Police Department sees value in reporting both NIBRS data and UCR data so that elected officials, city leaders and the public can review the detailed crime data, and yet still be able to put it in perspective (in a very general sense) with how Fort Worth compares to other peer cities.

To learn more about the differences between Uniform Crime Reporting and National Incident-Based Reporting System data, please visit the Fort Worth Police Department website at <http://www.fortworthpd.com/crime-information/>

1.3 Understanding NIBRS Figures

NIBRS compiles detailed reports on two types of offenses: Group "A" offenses and Group "B" offenses. The two groupings are based on the amount of reporting required for each. Both incidents and arrests are reported for Group "A" offenses, and only arrests are reported for Group "B" offenses.

The following criteria was used to determine if a crime should be designated as a Group "A" offense:

1. The seriousness or significance of the offense.
2. The frequency or volume of its occurrence.
3. The prevalence of the offense nationwide.
4. The probability of the offense being brought to law enforcement's attention.
5. The likelihood that law enforcement is the best channel for collecting data regarding the offense.
6. The burden placed on law enforcement in collecting data on the offense.
7. The national statistical validity and usefulness of the collected data.
8. The national UCR Program's responsibility to make crime data available not only to law enforcement but to others having a legitimate interest in it.

Group "A" offenses are categorized into one of the three following categories: 1) Crimes Against Person; 2) Crimes Against Property; 3) Crimes Against Society.

- 1) Crimes Against Person = Scores one offense for each victim
- 2) Crimes Against Property = Scores one offense for each distinct operation
(except Motor Vehicle Theft / one offense is counted per stolen vehicle)
- 3) Crime Against Society = Scores one offense for each violation

NIBRS Group A includes the following 22 Offenses:

- Homicide Offenses
- Sex Offenses, Forcible
- Sex Offenses, Non-forcible
- Robbery
- Assault Offenses
- Burglary / Breaking and Entering
- Larceny / Theft Offenses
- Motor Vehicle Theft
- Arson
- Bribery
- Counterfeiting / Forgery
- Destruction / Damage / Vandalism of Property
- Drug / Narcotic Offenses
- Embezzlement
- Extortion / Blackmail
- Fraud Offenses
- Gambling Offenses
- Kidnapping / Abduction
- Pornography / Obscene Material
- Prostitution Offenses
- Stolen Property Offenses
- Weapon Law Violations

UCR Part I includes the following eight offenses: Criminal Homicide, Forcible Rape, Robbery, Aggravated Assault, Burglary, Larceny-Theft, Motor Vehicle Theft, and Arson.

1.4 Significant Methodology and Definition Differences

A significant difference between NIBRS and UCR Traditional Summary Reporting is that for Crimes Against Persons, NIBRS counts the number of victims, while UCR counts the number of incidents, which can result in NIBRS figures being higher than UCR figures depending on the number of victims involved in the incidents. The definitions for Part 1 offenses used in Summary Reporting are different than the offense definitions used by the National Incident Based Reporting System (NIBRS). Visit <http://www.fortworthpd.com/crime-information/> for more details about the differences between NIBRS and UCR Traditional Summary Reporting.

Section II.

National Incident Based Reporting System (NIBRS)

1st Quarter 2011 Citywide NIBRS Crime Report

2.1 Overall citywide crime has decreased 3.3%, with notable decreases in robbery (-23.8%), counterfeiting/forgery (-17.6%) and burglary (-4.1%) attributing to an overall 4.9% decrease in Crimes Against Property compared to 1st Quarter last year. Crimes Against Persons increased 7.4% citywide with aggravated assaults, kidnapping, and forcible sex offenses attributing to this increase. The following table provides a comprehensive list of Fort Worth's citywide NIBRS Group A offenses by Crimes Against Persons, Crimes Against Property, and Crimes Against Society. These trends and enforcement efforts will also be explained in more detail throughout this report.

Figure 1—1st Quarter 2011 Citywide NIBRS Group A Offenses

Type of Offense			Number of Offenses		
			1st Quarter 2011	1st Quarter 2010	% Change
Crimes Against Persons (NIBRS - Group A)	13A - C	Assault Offenses	2,732	2,586	5.6%
	13A	Aggravated Assault	570	532	7.1%
	13B	Simple Assault	1,916	1,806	6.1%
	13C	Intimidation	246	248	-0.8%
	100	Kidnapping/Abduction	29	22	31.8%
	09A-B	Murder & Nonnegligent Manslaughter	7	12	-41.7%
	11A - D	Sex Offenses, Forcible	244	185	31.9%
	11A	Forcible Rape	80	70	14.3%
	11B-D	Other	164	115	42.6%
	36A - B	Sex Offenses, Nonforcible	0	0	0.0%
Crimes Against Persons Subtotal			3,012	2,805	7.4%
Crimes Against Property (NIBRS - Group A)	200	Arson	35	27	29.6%
	510	Bribery	3	0	0.0%
	220	Burglary/Breaking & Entering	1,967	2,051	-4.1%
		Residence	1,598	1,490	7.2%
		Business	217	344	-36.9%
		Other	152	217	-30.0%
	250	Counterfeiting/Forgery	145	176	-17.6%
	290	Destruction/Damage/Vandalism of Property (excluding arson)	2,286	2,271	0.7%
	270	Embezzlement	41	41	0.0%
	210	Extortion/Blackmail	0	0	0.0%
	26A - E	Fraud Offenses (excluding counterfeiting/forgery & bad checks)	1,107	1,156	-4.2%
	23A-H	Larceny/Theft Offenses - Total	4,984	5,350	-6.8%
	23A & B	Pocket-picking & Purse-snatching	86	87	-1.1%
	23C	Shoplifting	999	1,158	-13.7%
	23D	Theft from Building	41	47	-12.8%
	23E	Theft from Coin-Operated Machine or Device	30	34	-11.8%
	23F	Theft from Motor Vehicle	1,256	1,378	-8.9%
	23G	Theft of Motor Vehicle Parts or Accessories	898	1,018	-11.8%
	23H	All Other Larceny	1,674	1,628	2.8%
	240	Motor Vehicle Theft	497	499	-0.4%
120	Robbery	243	319	-23.8%	
280	Stolen Property Offenses	1	1	0.0%	
Crimes Against Property Subtotal			11,309	11,891	-4.9%
Crimes Against Society (NIBRS - Group A)	35A	Drug/Narcotic Violations (excluding DUI)	905	886	2.1%
	39A - D	Gambling Offenses	0	0	0.0%
	370	Pornography/Obscene Material	0	0	0.0%
	40A	Prostitution	111	100	11.0%
	520	Weapon Law Violations	125	112	11.6%
Crimes Against Society Subtotal			1,141	1,098	3.9%
NIBRS Group A Total			15,462	15,794	-2.1%
NIBRS Group A & B Total			20,219	20,919	-3.3%

For NIBRS offense definitions, go to www.fortworthpd.com/crime-information/

1st Quarter 2011 Citywide NIBRS Crime Rate

2.2 The following table displays the crime rate of each NIBRS Group A offense per 100,000 population.

Figure 2 - 1st Quarter 2011 Crime Rate Per 100,000 Population

Type of Offense			NIBRS Crime Rate / 100,000 Population		
			1st Qtr 2011 Crime Rate	1st Qtr 2010 Crime Rate	Rate Comparison
Crimes Against Persons (NIBRS - Group A)	13A - C	Assault Offenses	368.6	348.9	5.6%
	13A	Aggravated Assault	76.9	71.8	7.1%
	13B	Simple Assault	258.5	243.7	6.1%
	13C	Intimidation	33.2	33.5	-0.8%
	100	Kidnapping/Abduction	3.9	3.0	31.8%
	09A-B	Murder & Nonnegligent Manslaughter	0.9	1.6	-41.7%
	11A - D	Sex Offenses, Forcible	32.9	25.0	31.9%
	11A	Forcible Rape	10.8	9.4	14.3%
	11B-D	Other	22.1	15.5	42.6%
	36A - B	Sex Offenses, Nonforcible	0.0	0.0	0.0%
Crimes Against Persons Subtotal			406.4	378.4	7.4%
Crimes Against Property (NIBRS - Group A)	200	Arson	4.7	3.6	29.6%
	510	Bribery	0.4	0.0	0.0%
	220	Burglary/Breaking & Entering	265.4	276.7	-4.1%
		Residence	215.6	201.0	7.2%
		Business	29.3	46.4	-36.9%
		Other	20.5	29.3	-30.0%
	250	Counterfeiting/Forgery	19.6	23.7	-17.6%
		Destruction/Damage/Vandalism of Property (excluding arson)	308.4	306.4	0.7%
	270	Embezzlement	5.5	5.5	0.0%
	210	Extortion/Blackmail	0.0	0.0	0.0%
	26A - E	Fraud Offenses	149.4	156.0	-4.2%
	23A-H	Larceny/Theft Offenses - Total	672.4	721.8	-6.8%
	23A & B	Pocket-picking & Purse-snatching	11.6	11.7	-1.1%
	23C	Shoplifting	134.8	156.2	-13.7%
	23D	Theft from Building	5.5	6.3	-12.8%
	23E	Theft from Coin-Operated Machine or Device	4.0	4.6	-11.8%
	23F	Theft from Motor Vehicle	169.5	185.9	-8.9%
	23G	Theft of Motor Vehicle Parts or Accessories	121.2	137.3	-11.8%
	23H	All Other Larceny	225.8	219.6	2.8%
	240	Motor Vehicle Theft	67.1	67.3	-0.4%
120	Robbery	32.8	43.0	-23.8%	
280	Stolen Property Offenses	0.1	0.1	0.0%	
Crimes Against Property Subtotal			1,525.8	1,604.3	-4.9%
Crimes Against Society (NIBRS - Group A)	35A	Drug/Narcotic Violations (excluding DUI)	122.1	119.5	2.1%
	39A - D	Gambling Offenses	0.0	0.0	0.0%
	370	Pornography/Obscene Material	0.0	0.0	0.0%
	40A	Prostitution	15.0	13.5	11.0%
	520	Weapon Law Violations	16.9	15.1	11.6%
Crimes Against Society Subtotal			153.9	148.1	3.9%
Group A Total			2,086.1	2,130.9	-2.1%
Group B Total			641.8	691.4	-7.2%
Group A & B Total			2,727.9	2,822.3	-3.3%

Note: The Crime Rates as listed above use the Fort Worth population estimate of 741,206 based on the 2010 Census data, released in February 2011.

2.3 Crimes Against Person (NIBRS - Group A)

Crimes Against Persons increased 7.4% citywide, with 3,012 offenses (victims) reported in 1st Quarter 2011 compared to 2,805 offenses (victims) reported in 1st Quarter 2010. Kidnapping, forcible sex offenses and assault offenses attributed the most to this increase. Of all the Crimes Against Persons, approximately 46% were domestic-related.

Figure 3 — 1st Quarter 2011, Citywide NIBRS Group A, Crimes Against Person

Type of Offense		Number of Offenses			
		1st Quarter 2011	1st Quarter 2010	% Change	
Crimes Against Persons (NIBRS - Group A)	13A - C	Assault Offenses	2,732	2,586	5.6%
	13A	Aggravated Assault	570	532	7.1%
	13B	Simple Assault	1,916	1,806	6.1%
	13C	Intimidation	246	248	-0.8%
	100	Kidnapping/Abduction	29	22	31.8%
	09A-B	Murder & Nonnegligent Manslaughter	7	12	-41.7%
	11A - D	Sex Offenses, Forcible	244	185	31.9%
	11A	Forcible Rape	80	70	14.3%
	11B-D	Other	164	115	42.6%
	36A - B	Sex Offenses, Nonforcible	0	0	0.0%
	Crimes Against Persons Subtotal		3,012	2,805	7.4%

* The crime categories are listed in alphabetical order for ease of reference rather than in order of their importance.

** Violent crime (including murder, aggravated assault, and forcible rape) increased 7% when comparing 1st Quarter 2011 (657 offenses) to 1st Quarter 2010 (614 offenses).

For NIBRS offense definitions, go to www.fortworthpd.com/crime-information/

Most Crimes Against Person victims are victims of simple assaults, which is defined as an unlawful physical attack by one person upon another where neither the offender displays a weapon, nor the victim suffers obvious severe or aggravated bodily injury. Approximately 56% were domestic-related. These are followed by aggravated assaults. Aggravated assaults increased 7.1%. Approximately 40% of the aggravated assaults were domestic-related. Approximately 51% occurred within a residence, 27% near a roadway, 9% in a parking lot or parking garage, and 5% in a bar or night club. A total of 165 aggravated assault arrests were made during the 1st Quarter.

Intimidation is also an assault offense, which is defined as to unlawfully place another person in reasonable fear of bodily harm through the use of threatening words and/or other conduct but without displaying a weapon or subjecting the victim to actual physical attack. Intimidation offenses decreased slightly 0.8%.

Forcible rape offenses increased 14.3% with 10 more offenses in 1st Quarter 2011 compared to 1st Quarter 2010. Of the 80 forcible rape of-

fenses, the majority were known-offender related. There is no indication of any serial offenders.

One particular enforcement effort should be highlighted this quarter, which occurred on March 18th. Officers in North Division were able to interrupt a sexual assault in progress in an alleyway, which assisted in reducing further injury to the victim, and the violent assailant was arrested. The suspect did not have a prior history of sex offenses. The case has been filed and accepted by the District Attorney's Office.

The "Other" forcible sex offenses as listed below includes forcible sodomy, sexual assault with an object, and forcible fondling, which has increased 42.6% this quarter compared to 1st Quarter 2010. 36% of these reported offenses are incidents that occurred in prior reporting periods, but were not reported until now. Approximately 94% involve victims 17 years of age or under. Eight arrests were made specifically related to the offenses reported during the 1st Quarter with ongoing investigations, and 23 arrests have been made related to forcible sex offenses overall.

2.3 Crimes Against Person (NIBRS - Group A) Continued...

Kidnapping/Abduction increased 31.8% with 7 more offenses in 1st Quarter 2011 compared 1st Quarter 2010. It is important to understand what is included in this count.

Kidnapping/Abduction is defined by the National Incident Based Reporting System as the unlawful seizure, transportation, and/or detention of a person against his/her will or of a minor without the consent of his/her custodial parent or legal guardian.

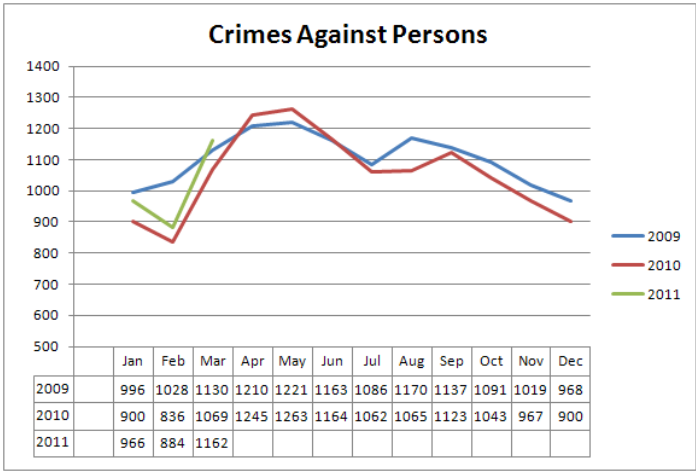
The Texas Penal Code breaks this definition out further by unlawful restraint, kidnapping, aggravated kidnapping, and unlawful transport. Please refer to Texas Penal Code Title 5, Chapter 20 for full definitions, but below are abbreviated definitions of each:

- **Unlawful restraint** - Intentionally or knowingly restrains another person....
Restrain—Restrict a person’s movements without consent, so as to interfere substantially with the person’s liberty, by moving the person from one place to another or by confining the person. Restraint without consent is accomplished if by force, intimidation, or deception or any means...
- **Kidnapping**—Intentionally or knowingly abducts another person...not coupled with intent to use or to threaten to use deadly force...the actor was a relative of the person abducted...
- **Aggravated Kidnapping**—Intentionally or knowingly abducts another person with the intent to hold him for ransom or reward...use him as a shield or hostage...inflict bodily injury...uses or exhibits a deadly weapon....
- **Unlawful Transport**—For pecuniary benefit transports an individual in a manner that is designed to conceal the individual from...law enforcement authorities...and creates a substantial likelihood that the individual will suffer serious bodily injury or death.

Of the 29 kidnapping offenses this quarter, 11 were unlawful restraints, 8 were kidnappings, 10 were aggravated kidnappings. 59% were either domestic or known suspect-related. The majority of domestic offenses are related to dating or child custody issues. All victims were recovered. No deaths resulted from any of the kidnappings.

Murder and Non-Negligent Manslaughter decreased by five offenses this quarter, which is a 41.7% decrease citywide compared to 1st Quarter 2010. Five of the seven cases have had dispositions filed. One additional disposition was filed on a case from 2010 as well. The motives of these murders range from being domestic-related, to robbery/narcotic, to arguments, to being reckless. One case in particular that was covered in the media, involved an officer calling in a vehicle engulfed in flames by Lake Arlington, of which the Fort Worth Fire Department extinguished the fire and located a victim in the trunk of the vehicle. An autopsy revealed that the victim had been shot. The investigation identified a suspect that had an arrest warrant issued for Sexual Assault of a Child and had previously attempted to fake his death in a prior year. Investigators located the suspect, and the suspect barricaded himself in an apartment. SWAT took the suspect into custody for Capital Murder.

Figure 4 — 2009-2011 Comparison of Citywide Crimes Against Person



2.4 Crimes Against Property (NIBRS - Group A)

Crimes Against Property decreased 4.9% citywide, with 11,309 offenses reported in 1st Quarter 2011 compared to 11,891 offenses reported in 1st Quarter 2010. Robbery, counterfeiting/forgery, larceny theft, fraud, and burglary/breaking & entering offenses all attributed to this 4.9% decrease.

Figure 5 — 1st Quarter 2011, Citywide NIBRS Group A, Crimes Against Property

Type of Offense		Number of Offenses			
		1st Quarter 2011	1st Quarter 2010	% Change	
Crimes Against Property (NIBRS - Group A)	200	Arson	35	27	29.6%
	510	Bribery	3	0	0.0%
	220	Burglary/Breaking & Entering	1,967	2,051	-4.1%
		Residence	1,598	1,490	7.2%
		Business	217	344	-36.9%
		Other	152	217	-30.0%
	250	Counterfeiting/Forgery	145	176	-17.6%
	290	Destruction/Damage/Vandalism of Property (excluding arson)	2,286	2,271	0.7%
	270	Embezzlement	41	41	0.0%
	210	Extortion/Blackmail	0	0	0.0%
	26A - E	Fraud Offenses (excluding counterfeiting/forgery & bad checks)	1,107	1,156	-4.2%
	23A-H	Larceny/Theft Offenses - Total	4,984	5,350	-6.8%
	23A & B	Pocket-picking & Purse-snatching	86	87	-1.1%
	23C	Shoplifting	999	1,158	-13.7%
	23D	Theft from Building	41	47	-12.8%
	23E	Theft from Coin-Operated Machine or Device	30	34	-11.8%
	23F	Theft from Motor Vehicle	1,256	1,378	-8.9%
	23G	Theft of Motor Vehicle Parts or Accessories	898	1,018	-11.8%
	23H	All Other Larceny	1,674	1,628	2.8%
	240	Motor Vehicle Theft	497	499	-0.4%
120	Robbery	243	319	-23.8%	
280	Stolen Property Offenses	1	1	0.0%	
Crimes Against Property Subtotal		11,309	11,891	-4.9%	

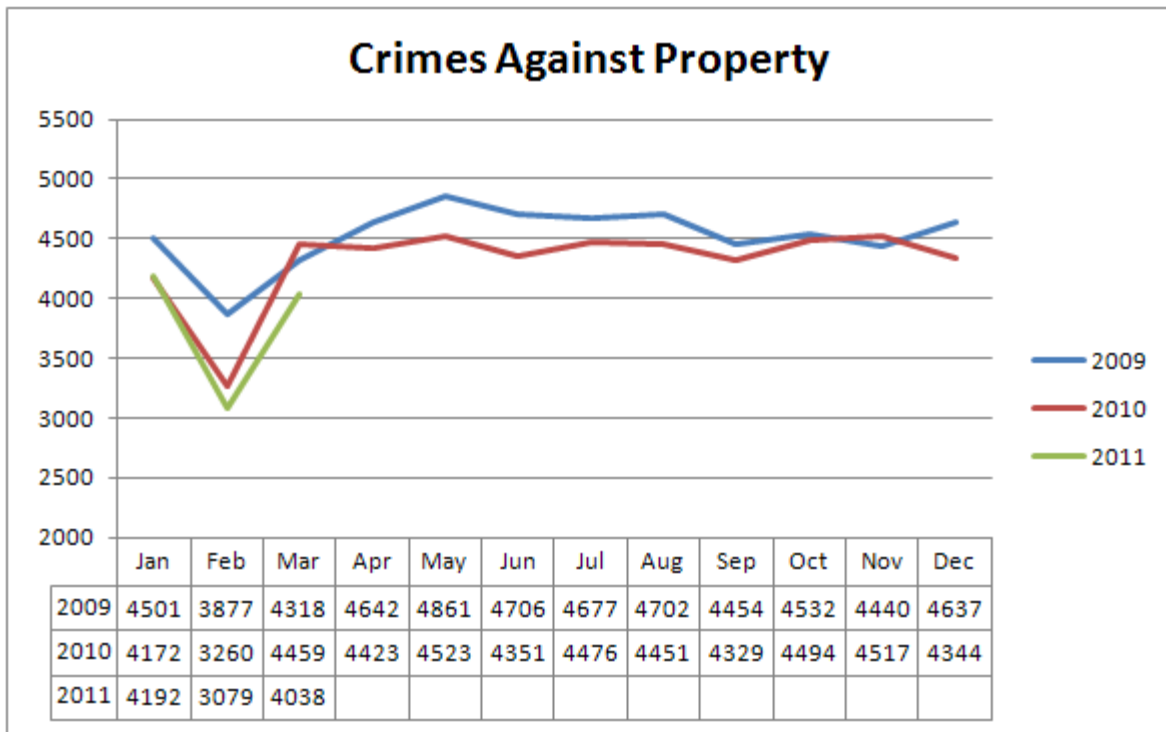
The crime categories are listed below in alphabetical order for ease of reference rather than in order of their importance.

For NIBRS offense definitions, go to www.fortworthpd.com/crime-information/

Also notable is the overall 4.1% decrease in burglaries, with a 36.9% decrease in burglary of business. Burglary of residences increased by 108 offenses (7.2%) in the 1st Quarter 2011. There has been a trend in stealing copper from vacant homes that has attributed to this increase. Both North and South Divisions were able to identify suspects in several cases, and several arrests have been made, which has reduced the number of incidents in those particular areas.

Arson increased by eight offenses (29.6%) this quarter compared to 1st Quarter 2010. The majority (54%) of these offenses occurred at residences.

Figure 6 — 2009-2011 Comparison of Citywide Crimes Against Property



2.5 Crimes Against Society (NIBRS—Group A)

Crimes Against Society figures are an indication of the department’s enforcement efforts and are counted one offense per violation. Enforcement efforts have lead to an overall 3.9% increase in offenses/reports related to Crimes Against Society.

Figure 7 — 1st Quarter 2011, Citywide NIBRS Group A, Crimes Against Society

Type of Offense		Number of Offenses		
		1st Quarter 2011	1st Quarter 2010	% Change
Crimes Against Society (NIBRS - Group A)	35A Drug/Narcotic Violations (excluding DUI)	905	886	2.1%
	39A - D Gambling Offenses	0	0	0.0%
	370 Pornography/Obscene Material	0	0	0.0%
	40A Prostitution	111	100	11.0%
	520 Weapon Law Violations	125	112	11.6%
Crimes Against Society Subtotal		1,141	1,098	3.9%

The crime categories are listed below in alphabetical order for ease of reference rather than in order of their importance.

For NIBRS offense definitions, go to www.fortworthpd.com/crime-information/

2.6 Other Offenses (NIBRS—Group B)

Group “B” offenses are reported only when an arrest is involved. A Group “B” Arrest Report does not include incident data but uses only data elements that describe the arrestee and the circumstances of the arrest. Group “B” offenses decreased 7.2% overall, with increases in trespass of real property (20.7%) and drunkenness (8%).

Although crime was fairly low during the Super Bowl enforcement period, the increase in drunkenness can partially be attributed to Super Bowl activities. Thirty-one public intoxication arrests were made during the Super Bowl enforcement period.

Figure 8—1st Quarter 2011, Citywide NIBRS Group B, Other Offenses

Type of Offense		Number of Offenses/Arrests			
		1st Quarter 2011	1st Quarter 2010	% Change	
Other Offenses (NIBRS- Group B)	90A	Bad Checks	1	0	0.0%
	90B	Curfew/Loitering/Vagrancy Violations	46	97	-52.6%
	90C	Disorderly Conduct	320	462	-30.7%
	90D	Driving Under the Influence	346	526	-34.2%
	90E	Drunkenness	822	761	8.0%
	90F	Family Offenses, Nonviolent	193	243	-20.6%
	90G	Liquor Law Violations	235	243	-3.3%
	90H	Peeping Tom	1	5	-80.0%
	90I	Runaway	393	445	-11.7%
	90J	Trespass of Real Property	233	193	20.7%
	90Z	All Other Offenses	2,167	2,150	0.8%
GROUP B TOTAL		4,757	5,125	-7.2%	
NIBRS Total (Group A & B)		20,219	20,919	-3.3%	

The crime categories are listed below in alphabetical order for ease of reference rather than in order of their importance.

For NIBRS offense definitions, go to www.fortworthpd.com/crime-information/

2.7 Gang Unit Report

A total of 208 gang-related incidents occurred in the 1st Quarter 2011 compared to 315 gang-related incidents in 1st Quarter 2010—a 34% decrease in gang crime.

It should be noted that a single incident may involve multiple offenses. For example, an incident may involve a narcotic violation and an assault offense, which would be documented within one report and then flagged as a gang-related incident. The table below shows the number of offenses within the gang-related incident reports.

What is Gang-Related Crime?

Gang-Related Crime is any criminal act, including but not limited to those, involving gang members or gang associates committed for the benefit or furtherance of any criminal gang.

Figure 9 - 1st Quarter 2011, Gang-Related Offenses

Type of Offense			Number of Gang-Related Offenses		
			1st Quarter 2011	1st Quarter 2010	% Change
Crimes Against Person	13A-C	Assault Offenses	81	106	-23.6%
	100	Kidnapping	1	2	-50.0%
	09A	Murder & Non-negligent Manslaughter	0	1	-100.0%
	11A-D	Sex Offenses, Forcible	0	1	-100.0%
Crimes Against Property	200	Arson Incidents	1	0	100.0%
	220	Burglary / Breaking & Entering	3	4	-25.0%
	290	**Destruction/Damage/Vandalism of Property	55	99	-44.4%
	23A-H	Larceny Theft	4	3	33.3%
	240	Motor Vehicle Theft	0	0	0.0%
	120	Robbery	8	8	0.0%
Crimes Against Society	35A	Drug Narcotic Violation	51	68	-25.0%
	520	Weapon Law Violation	24	21	14.3%
Other	90A-Z	Other	42	76	-44.7%

*In the 1st Quarter 2011, there were a total of eight acts of deadly conduct stemming from aggravated assault and vandalism of property incidents compared to twelve acts of deadly conduct in 1st Quarter 2010.

**Of the 55 Destruction/Damage/Vandalism of Property incidents, 41 or 75% were gang graffiti-related.

Figure 10 - 1st Quarter 2011 Gang-Related Arrests By Division

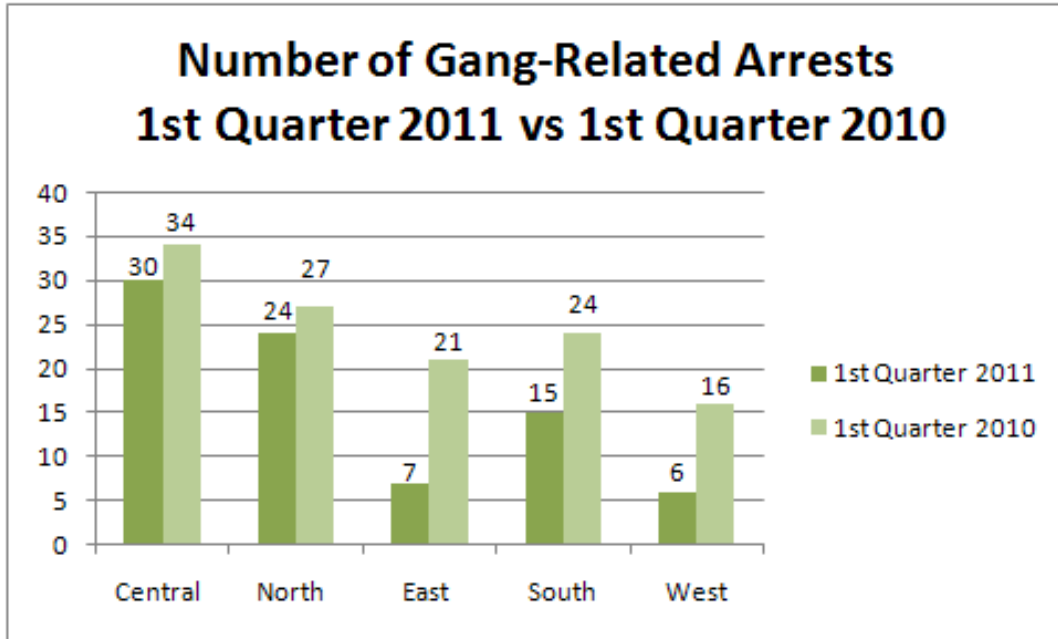
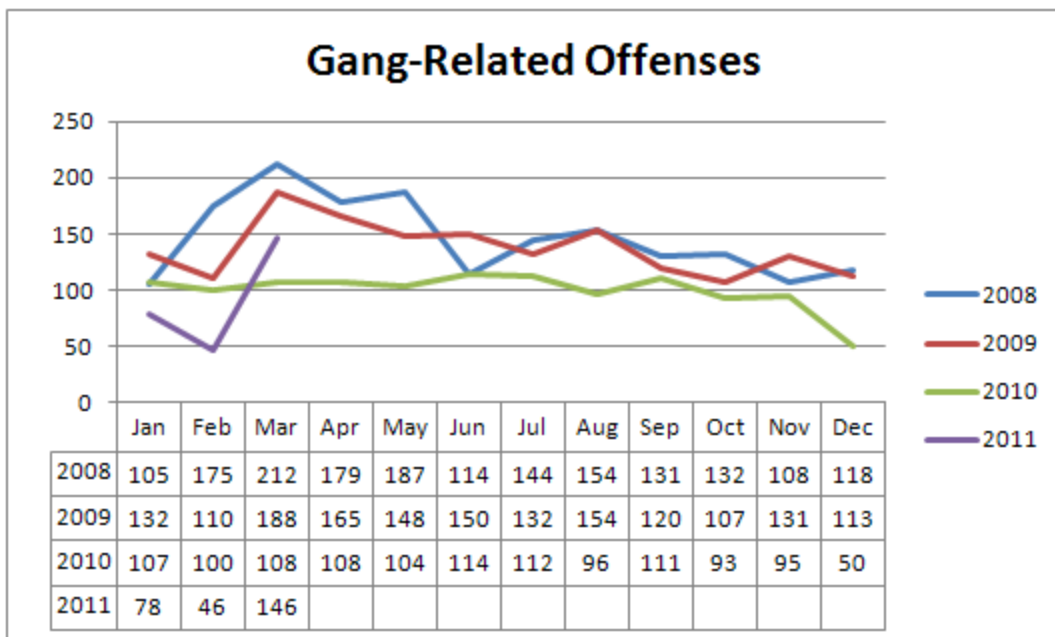


Figure 11 - 2008-2011 Comparison of Citywide Gang-Related Offenses



2.8 Offenses By Council District

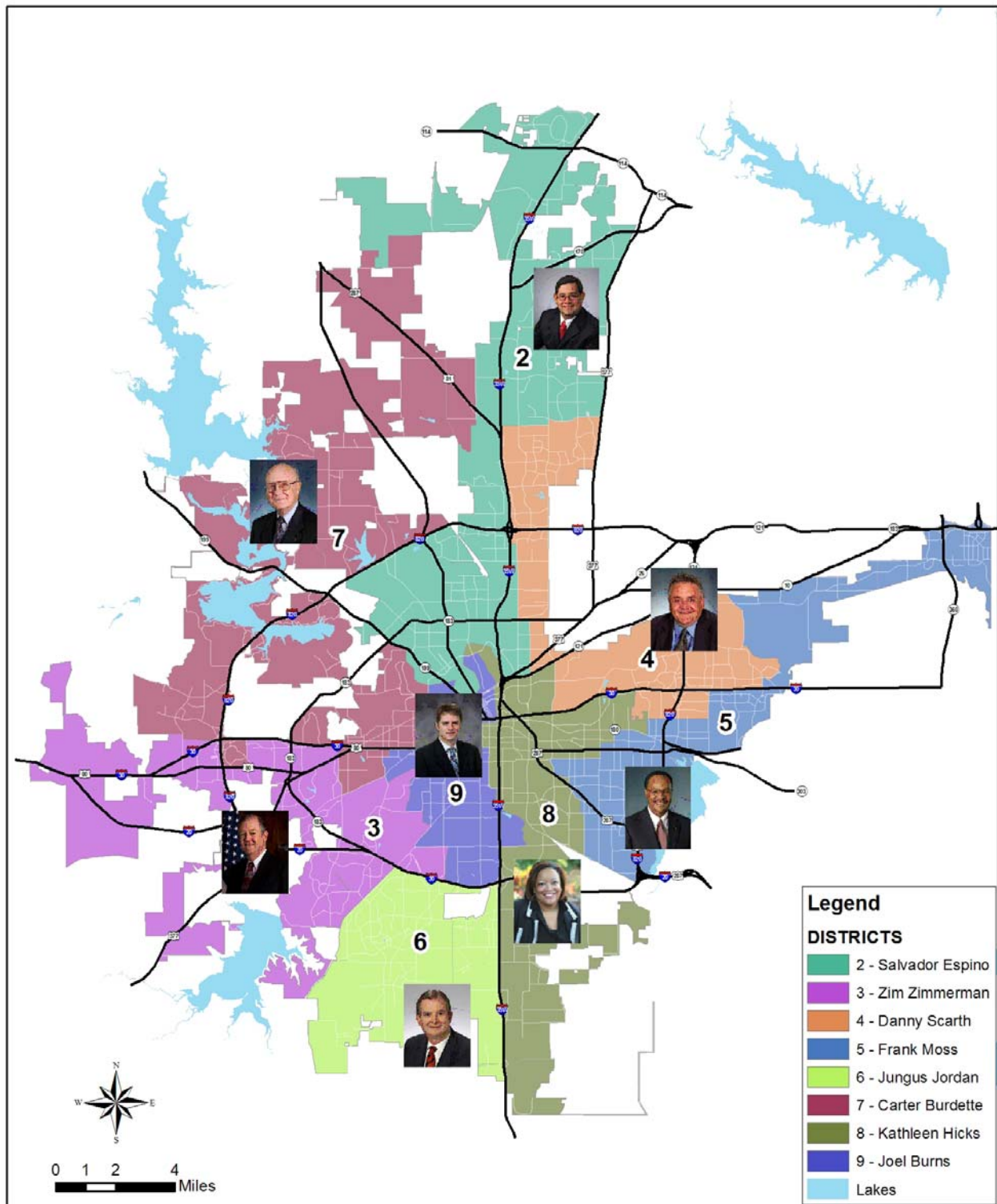
Figure 12—Summary of Offenses By Council District

Type of Offense			1st Quarter - Number of Offenses By Council District							Unknown Location*	Citywide	
			Council District 2 Espino	Council District 3 Zimmerman	Council District 4 Scarth	Council District 5 Moss	Council District 6 Jordan	Council District 7 Burdette	Council District 8 Hicks			Council District 9 Burns
Crimes Against Persons (NIBRS - Group A)	13A - C	Assault Offenses	364	255	255	418	278	342	512	300	8	2,732
	13A	Aggravated Assault	88	53	40	117	47	60	109	54	2	570
	13B	Simple Assault	240	176	197	264	215	241	354	223	6	1,916
	13C	Intimidation	36	26	18	37	16	41	49	23	0	246
	100	Kidnapping/Abduction	4	1	3	7	4	2	7	1	0	29
	09A-B	Murder & Nonnegligent Manslaughter	1	0	0	3	0	2	0	1	0	7
	11A - D	Sex Offenses, Forcible	37	18	29	25	27	46	38	24	0	244
	11A	Forcible Rape	10	7	8	8	5	17	16	9	0	80
	11B-D	Other	27	11	21	17	22	29	22	15	0	164
36A - B	Sex Offenses, Nonforcible	0	0	0	0	0	0	0	0	0	0	
Crimes Against Persons Subtotal			406	274	287	453	309	392	557	326	8	3,012
Crimes Against Property (NIBRS - Group A)	200	Arson	8	3	3	8	4	4	3	2	0	35
	510	Bribery	0	0	0	0	0	1	2	0	0	3
	220	Burglary/Breaking & Entering	240	214	252	338	218	219	316	169	1	1,967
		Residence	174	176	212	288	193	170	248	136	1	1,598
		Business	43	27	26	28	13	26	34	20	0	217
		Other	23	11	14	22	12	23	34	13	0	152
	250	Counterfeiting/Forgery	20	22	14	15	21	13	22	18	0	145
	290	Destruction/Damage/Vandalism of Property (excluding arson)	336	227	224	348	282	263	324	280	2	2,286
	270	Embezzlement	6	8	3	3	3	6	6	5	1	41
	210	Extortion/Blackmail	0	0	0	0	0	0	0	0	0	0
	26A - E	Fraud Offenses (excluding counterfeiting/forgery & bad checks)	127	146	157	131	143	156	118	124	5	1,107
	23A-H	Larceny/Theft Offenses - Total	709	735	640	507	505	679	585	621	3	4,984
	23A & B	Pocket-picking & Purse-snatching	7	14	8	9	10	8	18	12	0	86
	23C	Shoplifting	94	212	178	49	136	130	54	146	0	999
	23D	Theft from Building	7	3	5	5	0	3	11	7	0	41
	23E	Theft from Coin-Operated Machine or Device	3	3	3	8	5	0	1	7	0	30
	23F	Theft from Motor Vehicle	220	222	135	99	123	194	109	152	2	1,256
23G	Theft of Motor Vehicle Parts or Accessories	139	124	113	106	89	119	102	106	0	898	
23H	All Other Larceny	239	157	198	231	142	225	290	191	1	1,674	
240	Motor Vehicle Theft	67	45	71	77	53	50	61	72	1	497	
120	Robbery	24	30	21	36	26	22	58	26	0	243	
280	Stolen Property Offenses	0	0	0	0	0	0	0	1	0	1	
Crimes Against Property Subtotal			1,537	1,430	1,385	1,463	1,255	1,413	1,495	1,318	13	11,309
Crimes Against Society (NIBRS - Group A)	35A	Drug/Narcotic Violations (excluding DUI)	127	83	89	139	63	66	211	120	7	905
	39A - D	Gambling Offenses	0	0	0	0	0	0	0	0	0	0
	370	Pornography/Obscene Material	0	0	0	0	0	0	0	0	0	0
	40A	Prostitution	3	5	4	25	1	1	71	1	0	111
	520	Weapon Law Violations	20	13	13	19	13	11	24	12	0	125
Crimes Against Society Subtotal			150	101	106	183	77	78	306	133	7	1,141
Total Group A			2,093	1,805	1,778	2,099	1,641	1,883	2,358	1,777	28	15,462

"Unknown Locations" are reports in which an address was entered by an officer and is currently being verified; and therefore is not assigned to a specific Council District at the time of this report.

View a [Council District Map](#). For NIBRS offense definitions, go to www.fortworthpd.com/crime-information/

Figure 13 - Fort Worth City Council District Map



**Fort Worth Police Department
COUNCIL DISTRICTS**



Figure 14—Offenses Reported in Council District 2

	NIBRS Code	Types of Offenses	Number of Offenses 1st Quarter 2011			Number of Offenses Quarterly Comparison		
			Council District 2 Espino	Citywide	% Total	1st Quarter 2011	1st Quarter 2010	% Change
Crimes Against Persons (NIBRS - Group A)	13A - C	Assault Offenses	364	2,732	13.3%	364	391	-6.9%
	13A	Aggravated Assault	88	570	15.4%	88	108	-18.5%
	13B	Simple Assault	240	1,916	12.5%	240	249	-3.6%
	13C	Intimidation	36	246	14.6%	36	34	5.9%
	100	Kidnapping/Abduction	4	29	13.8%	4	7	-42.9%
	09A-B	Murder & Nonnegligent Manslaughter	1	7	14.3%	1	2	-50.0%
	11A - D	Sex Offenses, Forcible	37	244	15.2%	37	39	-5.1%
	11A	Forcible Rape	10	80	12.5%	10	10	0.0%
	11B-D	Other	27	164	16.5%	27	29	-6.9%
	36A - B	Sex Offenses, Nonforcible	0	0	0.0%	0	0	0.0%
Crimes Against Persons Subtotal			406	3,012	13.5%	406	439	-7.5%
Crimes Against Property (NIBRS - Group A)	200	Arson	8	35	22.9%	8	4	100.0%
	510	Bribery	0	3	0.0%	0	0	0.0%
	220	Burglary/Breaking & Entering	240	1,967	12.2%	240	251	-4.4%
		Residence	174	1,598	10.9%	174	164	6.1%
		Business	43	217	19.8%	43	50	-14.0%
		Other	23	152	15.1%	23	37	-37.8%
	250	Counterfeiting/Forgery	20	145	13.8%	20	23	-13.0%
	290	Destruction/Damage/Vandalism of Property (excluding arson)	336	2,286	14.7%	336	339	-0.9%
	270	Embezzlement	6	41	14.6%	6	8	-25.0%
	210	Extortion/Blackmail	0	0	0.0%	0	0	0.0%
	26A - E	Fraud Offenses	127	1,107	11.5%	127	133	-4.5%
	23A-H	Larceny/Theft Offenses - Total	709	4,984	14.2%	709	795	-10.8%
	23A & B	Pocket-picking & Purse-snatching	7	86	8.1%	7	9	-22.2%
	23C	Shoplifting	94	999	9.4%	94	117	-19.7%
	23D	Theft from Building	7	41	17.1%	7	7	0.0%
	23E	Theft from Coin-Operated Machine or Device	3	30	10.0%	3	3	0.0%
	23F	Theft from Motor Vehicle	220	1,256	17.5%	220	255	-13.7%
	23G	Theft of Motor Vehicle Parts or Accessories	139	898	15.5%	139	178	-21.9%
	23H	All Other Larceny	239	1,674	14.3%	239	226	5.8%
	240	Motor Vehicle Theft	67	497	13.5%	67	83	-19.3%
120	Robbery	24	243	9.9%	24	27	-11.1%	
280	Stolen Property Offenses	0	1	0.0%	0	1	-100.0%	
Crimes Against Property Subtotal			1,537	11,309	13.6%	1,537	1,664	-7.6%
Crimes Against Society (NIBRS - Group A)	35A	Drug/Narcotic Violations (excluding DUI)	127	905	14.0%	127	136	-6.6%
	39A - D	Gambling Offenses	0	0	0.0%	0	0	0.0%
	370	Pornography/Obscene Material	0	0	0.0%	0	0	0.0%
	40A	Prostitution	3	111	2.7%	3	4	-25.0%
	520	Weapon Law Violations	20	125	16.0%	20	19	5.3%
Crimes Against Society Subtotal			150	1,141	13.1%	150	159	-5.7%
Total Group A			2,093	15,462	13.5%	2,093	2,262	-7.5%
Other (NIBRS - Group B)	90B	Curfew / Loitering / Vagrancy Violations	10	46	21.7%	10	22	-54.5%
	90D	Driving Under the Influence	53	346	15.3%	53	98	-45.9%
	90E	Drunkenness	143	822	17.4%	143	160	-10.6%

View a [Council District Map](#). For NIBRS offense definitions, go to www.fortworthpd.com/crime-information/

Figure 15—Offenses Reported in Council District 3

	NIBRS Code	Types of Offenses	Number of Offenses 1st Quarter 2011			Number of Offenses Quarterly Comparison		
			Council District 3 Zimmerman	Citywide	% Total	1st Quarter 2011	1st Quarter 2010	% Change
Crimes A gainst Persons (NIBRS - Group A)	13A - C	Assault Offenses	255	2,732	9.3%	255	236	8.1%
	13A	Aggravated Assault	53	570	9.3%	53	39	35.9%
	13B	Simple Assault	176	1,916	9.2%	176	177	-0.6%
	13C	Intimidation	26	246	10.6%	26	20	30.0%
	100	Kidnapping/Abduction	1	29	3.4%	1	2	-50.0%
	09A-B	Murder & Nonnegligent Manslaughter	0	7	0.0%	0	2	-100.0%
	11A - D	Sex Offenses, Forcible	18	244	7.4%	18	12	50.0%
	11A	Forcible Rape	7	80	8.8%	7	3	133.3%
	11B-D	Other	11	164	6.7%	11	9	22.2%
	36A - B	Sex Offenses, Nonforcible	0	0	0.0%	0	0	0.0%
Crimes Against Persons Subtotal			274	3,012	9.1%	274	252	8.7%
Crimes A gainst Property (NIBRS - Group A)	200	Arson	3	35	8.6%	3	3	0.0%
	510	Bribery	0	3	0.0%	0	0	0.0%
	220	Burglary/Breaking & Entering	214	1,967	10.9%	214	228	-6.1%
		Residence	176	1,598	11.0%	176	173	1.7%
		Business	27	217	12.4%	27	36	-25.0%
		Other	11	152	7.2%	11	19	-42.1%
	250	Counterfeiting/Forgery	22	145	15.2%	22	28	-21.4%
	290	Destruction/Damage/Vandalism of Property (excluding arson)	227	2,286	9.9%	227	221	2.7%
	270	Embezzlement	8	41	19.5%	8	8	0.0%
	210	Extortion/Blackmail	0	0	0.0%	0	0	0.0%
	26A - E	Fraud Offenses	146	1,107	13.2%	146	138	5.8%
	23A-H	Larceny/Theft Offenses - Total	735	4,984	14.7%	735	746	-1.5%
	23A & B	Pocket-picking & Purse-snatching	14	86	16.3%	14	10	40.0%
	23C	Shoplifting	212	999	21.2%	212	207	2.4%
	23D	Theft from Building	3	41	7.3%	3	4	-25.0%
	23E	Theft from Coin-Operated Machine or Device	3	30	10.0%	3	2	50.0%
	23F	Theft from Motor Vehicle	222	1,256	17.7%	222	216	2.8%
	23G	Theft of Motor Vehicle Parts or Accessories	124	898	13.8%	124	151	-17.9%
	23H	All Other Larceny	157	1,674	9.4%	157	156	0.6%
240	Motor Vehicle Theft	45	497	9.1%	45	62	-27.4%	
120	Robbery	30	243	12.3%	30	34	-11.8%	
280	Stolen Property Offenses	0	1	0.0%	0	0	0.0%	
Crimes Against Property Subtotal			1,430	11,309	12.6%	1,430	1,468	-2.6%
Crimes A gainst Society (NIBRS - Grp A)	35A	Drug/Narcotic Violations (excluding DUI)	83	905	9.2%	83	84	-1.2%
	39A - D	Gambling Offenses	0	0	0.0%	0	0	0.0%
	370	Pornography/Obscene Material	0	0	0.0%	0	0	0.0%
	40A	Prostitution	5	111	4.5%	5	3	66.7%
	520	Weapon Law Violations	13	125	10.4%	13	10	30.0%
Crimes Against Society Subtotal			101	1,141	8.9%	101	97	4.1%
Total Group A			1,805	15,462	11.7%	1,805	1,817	-0.7%
Other (NIBRS - Grp B)	90B	Curfew / Loitering / Vagrancy Violations	1	46	2.2%	1	7	-85.7%
	90D	Driving Under the Influence	28	346	8.1%	28	49	-42.9%
	90E	Drunkenness	50	822	6.1%	50	65	-23.1%

View a [Council District Map](#). For NIBRS offense definitions, go to www.fortworthpd.com/crime-information/

Figure 16—Offenses Reported in Council District 4

	NIBRS Code	Types of Offenses	Number of Offenses 1st Quarter 2011			Number of Offenses Quarterly Comparison		
			Council District 4 Scarth	Citywide	% Total	1st Quarter 2011	1st Quarter 2010	% Change
Crimes Against Persons (NIBRS - Group A)	13A - C	Assault Offenses	255	2,732	9.3%	255	242	5.4%
	13A	Aggravated Assault	40	570	7.0%	40	50	-20.0%
	13B	Simple Assault	197	1,916	10.3%	197	170	15.9%
	13C	Intimidation	18	246	7.3%	18	22	-18.2%
	100	Kidnapping/Abduction	3	29	10.3%	3	0	300.0%
	09A-B	Murder & Nonnegligent Manslaughter	0	7	0.0%	0	3	-100.0%
	11A - D	Sex Offenses, Forcible	29	244	11.9%	29	13	123.1%
	11A	Forcible Rape	8	80	10.0%	8	6	33.3%
	11B-D	Other	21	164	12.8%	21	7	200.0%
	36A - B	Sex Offenses, Nonforcible	0	0	0.0%	0	0	0.0%
Crimes Against Persons Subtotal			287	3,012	9.5%	287	258	11.2%
Crimes Against Property (NIBRS - Group A)	200	Arson	3	35	8.6%	3	1	200.0%
	510	Bribery	0	3	0.0%	0	0	0.0%
	220	Burglary/Breaking & Entering	252	1,967	12.8%	252	271	-7.0%
		Residence	212	1,598	13.3%	212	189	12.2%
		Business	26	217	12.0%	26	57	-54.4%
		Other	14	152	9.2%	14	25	-44.0%
	250	Counterfeiting/Forgery	14	145	9.7%	14	19	-26.3%
	290	Destruction/Damage/Vandalism of Property (excluding arson)	224	2,286	9.8%	224	257	-12.8%
	270	Embezzlement	3	41	7.3%	3	4	-25.0%
	210	Extortion/Blackmail	0	0	0.0%	0	0	0.0%
	26A - E	Fraud Offenses	157	1,107	14.2%	157	145	8.3%
	23A-H	Larceny/Theft Offenses - Total	640	4,984	12.8%	640	790	-19.0%
	23A & B	Pocket-picking & Purse-snatching	8	86	9.3%	8	10	-20.0%
	23C	Shoplifting	178	999	17.8%	178	218	-18.3%
	23D	Theft from Building	5	41	12.2%	5	3	66.7%
	23E	Theft from Coin-Operated Machine or Device	3	30	10.0%	3	2	50.0%
	23F	Theft from Motor Vehicle	135	1,256	10.7%	135	184	-26.6%
	23G	Theft of Motor Vehicle Parts or Accessories	113	898	12.6%	113	151	-25.2%
23H	All Other Larceny	198	1,674	11.8%	198	222	-10.8%	
240	Motor Vehicle Theft	71	497	14.3%	71	54	31.5%	
120	Robbery	21	243	8.6%	21	39	-46.2%	
280	Stolen Property Offenses	0	1	0.0%	0	0	0.0%	
Crimes Against Property Subtotal			1,385	11,309	12.2%	1,385	1,580	-12.3%
Crimes Against Society (NIBRS - Grp A)	35A	Drug/Narcotic Violations (excluding DUI)	89	905	9.8%	89	99	-10.1%
	39A - D	Gambling Offenses	0	0	0.0%	0	0	0.0%
	370	Pornography/Obscene Material	0	0	0.0%	0	0	0.0%
	40A	Prostitution	4	111	3.6%	4	4	0.0%
	520	Weapon Law Violations	13	125	10.4%	13	15	-13.3%
Crimes Against Society Subtotal			106	1,141	9.3%	106	118	-10.2%
Total Group A			1,778	15,462	11.5%	1,778	1,956	-9.1%
Other (NIBRS - Grp B)	90B	Curfew / Loitering / Vagrancy Violations	5	46	10.9%	5	13	-61.5%
	90D	Driving Under the Influence	21	346	6.1%	21	42	-50.0%
	90E	Drunkenness	70	822	8.5%	70	53	32.1%

View a [Council District Map](#). For NIBRS offense definitions, go to www.fortworthpd.com/crime-information/

Figure 17—Offenses Reported in Council District 5

	NIBRS Code	Types of Offenses	Number of Offenses 1st Quarter 2011			Number of Offenses Quarterly Comparison		
			Council District 5 Moss	Citywide	% Total	1st Quarter 2011	1st Quarter 2010	% Change
Crimes Against Persons (NIBRS - Group A)	13A - C	Assault Offenses	418	2,732	15.3%	418	294	42.2%
	13A	Aggravated Assault	117	570	20.5%	117	68	72.1%
	13B	Simple Assault	264	1,916	13.8%	264	193	36.8%
	13C	Intimidation	37	246	15.0%	37	33	12.1%
	100	Kidnapping/Abduction	7	29	24.1%	7	2	250.0%
	09A-B	Murder & Nonnegligent Manslaughter	3	7	42.9%	3	1	200.0%
	11A - D	Sex Offenses, Forcible	25	244	10.2%	25	31	-19.4%
	11A	Forcible Rape	8	80	10.0%	8	14	-42.9%
	11B-D	Other	17	164	10.4%	17	17	0.0%
	36A - B	Sex Offenses, Nonforcible	0	0	0.0%	0	0	0.0%
Crimes Against Persons Subtotal			453	3,012	15.0%	453	328	38.1%
Crimes Against Property (NIBRS - Group A)	200	Arson	8	35	22.9%	8	6	33.3%
	510	Bribery	0	3	0.0%	0	0	0.0%
	220	Burglary/Breaking & Entering	338	1,967	17.2%	338	349	-3.2%
		Residence	288	1,598	18.0%	288	281	2.5%
		Business	28	217	12.9%	28	35	-20.0%
		Other	22	152	14.5%	22	33	-33.3%
	250	Counterfeiting/Forgery	15	145	10.3%	15	13	15.4%
	290	Destruction/Damage/Vandalism of Property (excluding arson)	348	2,286	15.2%	348	256	35.9%
	270	Embezzlement	3	41	7.3%	3	5	-40.0%
	210	Extortion/Blackmail	0	0	0.0%	0	0	0.0%
	26A - E	Fraud Offenses	131	1,107	11.8%	131	139	-5.8%
	23A-H	Larceny/Theft Offenses - Total	507	4,984	10.2%	507	516	-1.7%
	23A & B	Pocket-picking & Purse-snatching	9	86	10.5%	9	9	0.0%
	23C	Shoplifting	49	999	4.9%	49	71	-31.0%
	23D	Theft from Building	5	41	12.2%	5	5	0.0%
	23E	Theft from Coin-Operated Machine or Device	8	30	26.7%	8	1	700.0%
	23F	Theft from Motor Vehicle	99	1,256	7.9%	99	101	-2.0%
	23G	Theft of Motor Vehicle Parts or Accessories	106	898	11.8%	106	113	-6.2%
	23H	All Other Larceny	231	1,674	13.8%	231	216	6.9%
	240	Motor Vehicle Theft	77	497	15.5%	77	59	30.5%
120	Robbery	36	243	14.8%	36	69	-47.8%	
280	Stolen Property Offenses	0	1	0.0%	0	0	0.0%	
Crimes Against Property Subtotal			1,463	11,309	12.9%	1,463	1,412	3.6%
Crimes Against Society (NIBRS - Grp A)	35A	Drug/Narcotic Violations (excluding DUI)	139	905	15.4%	139	133	4.5%
	39A - D	Gambling Offenses	0	0	0.0%	0	0	0.0%
	370	Pornography/Obscene Material	0	0	0.0%	0	0	0.0%
	40A	Prostitution	25	111	22.5%	25	15	66.7%
	520	Weapon Law Violations	19	125	15.2%	19	19	0.0%
Crimes Against Society Subtotal			183	1,141	16.0%	183	167	9.6%
Total Group A			2,099	15,462	13.6%	2,099	1,907	10.1%
Other (NIBRS - Grp B)	90B	Curfew / Loitering / Vagrancy Violations	6	46	13.0%	6	15	-60.0%
	90D	Driving Under the Influence	22	346	6.4%	22	31	-29.0%
	90E	Drunkenness	46	822	5.6%	46	37	24.3%

View a [Council District Map](#). For NIBRS offense definitions, go to www.fortworthpd.com/crime-information/

Figure 18—Offenses Reported in Council District 6

	NIBRS Code	Types of Offenses	Number of Offenses 1st Quarter 2011			Number of Offenses Quarterly Comparison		
			Council District 6 Jordan	Citywide	% Total	1st Quarter 2011	1st Quarter 2010	% Change
Crimes A against Persons (NIBRS - Group A)	13A - C	Assault Offenses	278	2,732	10.2%	278	320	-13.1%
	13A	Aggravated Assault	47	570	8.2%	47	52	-9.6%
	13B	Simple Assault	215	1,916	11.2%	215	242	-11.2%
	13C	Intimidation	16	246	6.5%	16	26	-38.5%
	100	Kidnaping/Abduction	4	29	13.8%	4	4	0.0%
	09A-B	Murder & Nonnegligent Manslaughter	0	7	0.0%	0	1	-100.0%
	11A - D	Sex Offenses, Forcible	27	244	11.1%	27	14	92.9%
	11A	Forcible Rape	5	80	6.3%	5	6	-16.7%
	11B-D	Other	22	164	13.4%	22	8	175.0%
	36A - B	Sex Offenses, Nonforcible	0	0	0.0%	0	0	0.0%
Crimes Against Persons Subtotal			309	3,012	10.3%	309	339	-8.8%
Crimes A against Property (NIBRS - Group A)	200	Arson	4	35	11.4%	4	2	100.0%
	510	Bribery	0	3	0.0%	0	0	0.0%
	220	Burglary/Breaking & Entering	218	1,967	11.1%	218	228	-4.4%
		Residence	193	1,598	12.1%	193	173	11.6%
		Business	13	217	6.0%	13	37	-64.9%
		Other	12	152	7.9%	12	18	-33.3%
	250	Counterfeiting/Forgery	21	145	14.5%	21	24	-12.5%
	290	Destruction/Damage/Vandalism of Property (excluding arson)	282	2,286	12.3%	282	341	-17.3%
	270	Embezzlement	3	41	7.3%	3	1	200.0%
	210	Extortion/Blackmail	0	0	0.0%	0	0	0.0%
	26A - E	Fraud Offenses	143	1,107	12.9%	143	202	-29.2%
	23A-H	Larceny/Theft Offenses - Total	505	4,984	10.1%	505	489	3.3%
	23A & B	Pocket-picking & Purse-snatching	10	86	11.6%	10	10	0.0%
	23C	Shoplifting	136	999	13.6%	136	172	-20.9%
	23D	Theft from Building	0	41	0.0%	0	3	-100.0%
	23E	Theft from Coin-Operated Machine or Device	5	30	16.7%	5	8	-37.5%
	23F	Theft from Motor Vehicle	123	1,256	9.8%	123	104	18.3%
	23G	Theft of Motor Vehicle Parts or Accessories	89	898	9.9%	89	63	41.3%
	23H	All Other Larceny	142	1,674	8.5%	142	129	10.1%
	240	Motor Vehicle Theft	53	497	10.7%	53	39	35.9%
120	Robbery	26	243	10.7%	26	30	-13.3%	
280	Stolen Property Offenses	0	1	0.0%	0	0	0.0%	
Crimes Against Property Subtotal			1,255	11,309	11.1%	1,255	1,356	-7.4%
Crimes A against Society (NIBRS - Grp A)	35A	Drug/Narcotic Violations (excluding DUI)	63	905	7.0%	63	55	14.5%
	39A - D	Gambling Offenses	0	0	0.0%	0	0	0.0%
	370	Pornography/Obscene Material	0	0	0.0%	0	0	0.0%
	40A	Prostitution	1	111	0.9%	1	0	100.0%
	520	Weapon Law Violations	13	125	10.4%	13	12	8.3%
Crimes Against Society Subtotal			77	1,141	6.7%	77	67	14.9%
Total Group A			1,641	15,462	10.6%	1,641	1,762	-6.9%
Other (NIBRS - Grp B)	90B	Curfew / Loitering / Vagrancy Violations	7	46	15.2%	7	15	-53.3%
	90D	Driving Under the Influence	25	346	7.2%	25	29	-13.8%
	90E	Drunkness	47	822	5.7%	47	26	80.8%

View a [Council District Map](#). For NIBRS offense definitions, go to www.fortworthpd.com/crime-information/

Figure 19—Offenses Reported in Council District 7

	NIBRS Code	Types of Offenses	Number of Offenses 1st Quarter 2011			Number of Offenses Quarterly Comparison		
			Council District 7 Burdette	Citywide	% Total	1st Quarter 2011	1st Quarter 2010	% Change
Crimes A against Persons (NIBRS - Group A)	13A - C	Assault Offenses	342	2,732	12.5%	342	305	12.1%
	13A	Aggravated Assault	60	570	10.5%	60	40	50.0%
	13B	Simple Assault	241	1,916	12.6%	241	235	2.6%
	13C	Intimidation	41	246	16.7%	41	30	36.7%
	100	Kidnapping/Abduction	2	29	6.9%	2	4	-50.0%
	09A-B	Murder & Nonnegligent Manslaughter	2	7	28.6%	2	1	100.0%
	11A - D	Sex Offenses, Forcible	46	244	18.9%	46	22	109.1%
	11A	Forcible Rape	17	80	21.3%	17	5	240.0%
	11B-D	Other	29	164	17.7%	29	17	70.6%
36A - B	Sex Offenses, Nonforcible	0	0	0.0%	0	0	0.0%	
Crimes Against Persons Subtotal			392	3,012	13.0%	392	332	18.1%
Crimes A against Property (NIBRS - Group A)	200	Arson	4	35	11.4%	4	4	0.0%
	510	Bribery	1	3	33.3%	1	0	0.0%
	220	Burglary/Breaking & Entering	219	1,967	11.1%	219	260	-15.8%
		Residence	170	1,598	10.6%	170	192	-11.5%
		Business	26	217	12.0%	26	34	-23.5%
		Other	23	152	15.1%	23	34	-32.4%
	250	Counterfeiting/Forgery	13	145	9.0%	13	15	-13.3%
	290	Destruction/Damage/Vandalism of Property (excluding arson)	263	2,286	11.5%	263	267	-1.5%
	270	Embezzlement	6	41	14.6%	6	3	100.0%
	210	Extortion/Blackmail	0	0	0.0%	0	0	0.0%
	26A - E	Fraud Offenses	156	1,107	14.1%	156	150	4.0%
	23A-H	Larceny/Theft Offenses - Total	679	4,984	13.6%	679	750	-9.5%
	23A & B	Pocket-picking & Purse-snatching	8	86	9.3%	8	10	-20.0%
	23C	Shoplifting	130	999	13.0%	130	161	-19.3%
	23D	Theft from Building	3	41	7.3%	3	6	-50.0%
	23E	Theft from Coin-Operated Machine or Device	0	30	0.0%	0	7	-100.0%
	23F	Theft from Motor Vehicle	194	1,256	15.4%	194	238	-18.5%
	23G	Theft of Motor Vehicle Parts or Accessories	119	898	13.3%	119	130	-8.5%
	23H	All Other Larceny	225	1,674	13.4%	225	198	13.6%
	240	Motor Vehicle Theft	50	497	10.1%	50	51	-2.0%
120	Robbery	22	243	9.1%	22	30	-26.7%	
280	Stolen Property Offenses	0	1	0.0%	0	0	0.0%	
Crimes Against Property Subtotal			1,413	11,309	12.5%	1,413	1,530	-7.6%
Crimes A against Society (NIBRS - Grp A)	35A	Drug/Narcotic Violations (excluding DUI)	66	905	7.3%	66	96	-31.3%
	39A - D	Gambling Offenses	0	0	0.0%	0	0	0.0%
	370	Pornography/Obscene Material	0	0	0.0%	0	0	0.0%
	40A	Prostitution	1	111	0.9%	1	5	100.0%
	520	Weapon Law Violations	11	125	8.8%	11	10	10.0%
Crimes Against Society Subtotal			78	1,141	6.8%	78	111	-29.7%
Total Group A			1,883	15,462	12.2%	1,883	1,973	-4.6%
Other (NIBRS - Grp B)	90B	Curfew / Loitering / Vagrancy Violations	3	46	6.5%	3	15	-80.0%
	90D	Driving Under the Influence	33	346	9.5%	33	67	-50.7%
	90E	Drunkenness	73	822	8.9%	73	74	-1.4%

View a [Council District Map](#). For NIBRS offense definitions, go to www.fortworthpd.com/crime-information/

Figure 20—Offenses Reported in Council District 8

NIBRS Code	Types of Offenses	Number of Offenses 1st Quarter 2011			Number of Offenses Quarterly Comparison			
		Council District 8 Hicks	Citywide	% Total	1st Quarter 2011	1st Quarter 2010	% Change	
Crimes Against Persons (NIBRS - Group A)	13A - C	Assault Offenses	512	2,732	18.7%	512	482	6.2%
	13A	Aggravated Assault	109	570	19.1%	109	99	10.1%
	13B	Simple Assault	354	1,916	18.5%	354	350	1.1%
	13C	Intimidation	49	246	19.9%	49	33	48.5%
	100	Kidnapping/Abduction	7	29	24.1%	7	2	250.0%
	09A-B	Murder & Nonnegligent Manslaughter	0	7	0.0%	0	2	-100.0%
	11A - D	Sex Offenses, Forcible	38	244	15.6%	38	40	-5.0%
	11A	Forcible Rape	16	80	20.0%	16	17	-5.9%
	11B-D	Other	22	164	13.4%	22	23	-4.3%
36A - B	Sex Offenses, Nonforcible	0	0	0.0%	0	0	0.0%	
Crimes Against Persons Subtotal			557	3,012	18.5%	557	526	5.9%
Crimes Against Property (NIBRS - Group A)	200	Arson	3	35	8.6%	3	6	-50.0%
	510	Bribery	2	3	66.7%	2	0	0.0%
	220	Burglary/Breaking & Entering	316	1,967	16.1%	316	306	3.3%
		Residence	248	1,598	15.5%	248	221	12.2%
		Business	34	217	15.7%	34	54	-37.0%
		Other	34	152	22.4%	34	31	9.7%
	250	Counterfeiting/Forgery	22	145	15.2%	22	27	-18.5%
	290	Destruction/Damage/Vandalism of Property (excluding arson)	324	2,286	14.2%	324	286	13.3%
	270	Embezzlement	6	41	14.6%	6	7	-14.3%
	210	Extortion/Blackmail	0	0	0.0%	0	0	0.0%
	26A - E	Fraud Offenses	118	1,107	10.7%	118	134	-11.9%
	23A-H	Larceny/Theft Offenses - Total	585	4,984	11.7%	585	568	3.0%
	23A & B	Pocket-picking & Purse-snatching	18	86	20.9%	18	18	0.0%
	23C	Shoplifting	54	999	5.4%	54	57	-5.3%
	23D	Theft from Building	11	41	26.8%	11	4	175.0%
	23E	Theft from Coin-Operated Machine or Device	1	30	3.3%	1	2	-50.0%
	23F	Theft from Motor Vehicle	109	1,256	8.7%	109	117	-6.8%
	23G	Theft of Motor Vehicle Parts or Accessories	102	898	11.4%	102	104	-1.9%
	23H	All Other Larceny	290	1,674	17.3%	290	266	9.0%
	240	Motor Vehicle Theft	61	497	12.3%	61	70	-12.9%
120	Robbery	58	243	23.9%	58	53	9.4%	
280	Stolen Property Offenses	0	1	0.0%	0	0	0.0%	
Crimes Against Property Subtotal			1,495	11,309	13.2%	1,495	1,457	2.6%
Crimes Against Society (NIBRS - Grp A)	35A	Drug/Narcotic Violations (excluding DUI)	211	905	23.3%	211	177	19.2%
	39A - D	Gambling Offenses	0	0	0.0%	0	0	0.0%
	370	Pornography/Obscene Material	0	0	0.0%	0	0	0.0%
	40A	Prostitution	71	111	64.0%	71	62	100.0%
	520	Weapon Law Violations	24	125	19.2%	24	16	50.0%
Crimes Against Society Subtotal			306	1,141	26.8%	306	255	20.0%
Total Group A			2,358	15,462	15.3%	2,358	2,238	5.4%
Other (NIBRS - Grp B)	90B	Curfew / Loitering / Vagrancy Violations	7	46	15.2%	7	8	-12.5%
	90D	Driving Under the Influence	64	346	18.5%	64	76	-15.8%
	90E	Drunkenness	158	822	19.2%	158	128	23.4%

View a [Council District Map](#). For NIBRS offense definitions, go to www.fortworthpd.com/crime-information/

Figure 21—Offenses Reported in Council District 9

	NIBRS Code	Types of Offenses	Number of Offenses 1st Quarter 2011			Number of Offenses Quarterly Comparison		
			Council District 9 Burns	Citywide	% Total	1st Quarter 2011	1st Quarter 2010	% Change
Crimes Against Persons (NIBRS - Group A)	13A - C	Assault Offenses	300	2,732	11.0%	300	315	-4.8%
	13A	Aggravated Assault	54	570	9.5%	54	76	-28.9%
	13B	Simple Assault	223	1,916	11.6%	223	190	17.4%
	13C	Intimidation	23	246	9.3%	23	49	-53.1%
	100	Kidnapping/Abduction	1	29	3.4%	1	1	0.0%
	09A-B	Murder & Nonnegligent Manslaughter	1	7	14.3%	1	0	100.0%
	11A - D	Sex Offenses, Forcible	24	244	9.8%	24	13	84.6%
	11A	Forcible Rape	9	80	11.3%	9	8	12.5%
	11B-D	Other	15	164	9.1%	15	5	200.0%
	36A - B	Sex Offenses, Nonforcible	0	0	0.0%	0	0	0.0%
Crimes Against Persons Subtotal			326	3,012	10.8%	326	329	-0.9%
Crimes Against Property (NIBRS - Group A)	200	Arson	2	35	5.7%	2	1	100.0%
	510	Bribery	0	3	0.0%	0	0	0.0%
	220	Burglary/Breaking & Entering	169	1,967	8.6%	169	158	7.0%
		Residence	136	1,598	8.5%	136	97	40.2%
		Business	20	217	9.2%	20	41	-51.2%
		Other	13	152	8.6%	13	20	-35.0%
	250	Counterfeiting/Forgery	18	145	12.4%	18	27	-33.3%
	290	Destruction/Damage/Vandalism of Property (excluding arson)	280	2,286	12.2%	280	304	-7.9%
	270	Embezzlement	5	41	12.2%	5	5	0.0%
	210	Extortion/Blackmail	0	0	0.0%	0	0	0.0%
	26A - E	Fraud Offenses	124	1,107	11.2%	124	115	7.8%
	23A-H	Larceny/Theft Offenses - Total	621	4,984	12.5%	621	692	-10.3%
	23A & B	Pocket-picking & Purse-snatching	12	86	14.0%	12	10	20.0%
	23C	Shoplifting	146	999	14.6%	146	154	-5.2%
	23D	Theft from Building	7	41	17.1%	7	15	-53.3%
	23E	Theft from Coin-Operated Machine or Device	7	30	23.3%	7	9	-22.2%
	23F	Theft from Motor Vehicle	152	1,256	12.1%	152	163	-6.7%
	23G	Theft of Motor Vehicle Parts or Accessories	106	898	11.8%	106	127	-16.5%
	23H	All Other Larceny	191	1,674	11.4%	191	214	-10.7%
	240	Motor Vehicle Theft	72	497	14.5%	72	81	-11.1%
120	Robbery	26	243	10.7%	26	37	-29.7%	
280	Stolen Property Offenses	1	1	100.0%	1	0	0.0%	
Crimes Against Property Subtotal			1,318	11,309	11.7%	1,318	1,420	-7.2%
Crimes Against Society (NIBRS - Grp A)	35A	Drug/Narcotic Violations (excluding DUI)	120	905	13.3%	120	98	22.4%
	39A - D	Gambling Offenses	0	0	0.0%	0	0	0.0%
	370	Pornography/Obscene Material	0	0	0.0%	0	0	0.0%
	40A	Prostitution	1	111	0.9%	1	7	100.0%
	520	Weapon Law Violations	12	125	9.6%	12	11	9.1%
Crimes Against Society Subtotal			133	1,141	11.7%	133	116	14.7%
Total Group A			1,777	15,462	11.5%	1,777	1,865	-4.7%
Other (NIBRS - Grp B)	90B	Curfew / Loitering / Vagrancy Violations	7	46	15.2%	7	2	250.0%
	90D	Driving Under the Influence	90	346	26.0%	90	134	-32.8%
	90E	Drunkness	232	822	28.2%	232	217	6.9%

View a [Council District Map](#). For NIBRS offense definitions, go to www.fortworthpd.com/crime-information/

Section III.

Uniform Crime Reporting (UCR) Traditional Summary Report

3.1 1st Quarter 2011 Uniform Crime Reporting (UCR) Traditional Summary Report

Uniform Crime Report (UCR) Traditional Summary Reporting is a collective effort on the part of jurisdictions throughout the United States to present a nationwide view of crime using eight of the most serious and most commonly reported crimes including Criminal Homicide, Forcible Rape, Robbery, Aggravated Assault, Burglary, Larceny-Theft, Motor Vehicle Theft and Arson, also known as Part 1 crimes. In the Summary Reporting System, simply the number of criminal incidents are counted, as opposed to the more detailed data collected (using a different methodology) through the National Incident Based Reporting System (NIBRS).

Below represents the number of criminal incidents for each Part 1 crime:

Figure 22 - 1st Quarter 2011 UCR Traditional Summary Report

UCR Traditional Summary Report			
Part I Offenses	Number of Criminal Incidents		
	1st Quarter 2011	1st Quarter 2010	% Change
Murder & Nonnegligent Manslaughter	7	12	-41.7%
Forcible Rape	79	69	14.5%
Robbery	243	319	-23.8%
Aggravated Assault	470	441	6.6%
Burglary	1,967	2009	-2.1%
Larceny-Theft	4,984	5,350	-6.8%
Motor Vehicle Theft	492	495	-0.6%
Arson	35	27	29.6%
Total Part I Crime	8,277	8,722	-5.1%

Quick Note About Reporting Differences

A significant difference between NIBRS and UCR Traditional Summary Reporting is that for Crimes Against Persons, NIBRS counts the number of victims, while UCR counts the number of incidents, which can result in NIBRS figures being higher than UCR figures depending on the number of victims involved in the incidents. In addition, the definitions for Part 1 offenses used in Summary Reporting are different than the offense definitions used by the National Incident Based Reporting System (NIBRS). Visit <http://www.fortworthpd.com/crime-information/> for details about the differences between NIBRS and UCR Traditional Summary Reporting.

The Fort Worth Police Department submits NIBRS data to the Texas Department of Public Safety (TXDPS), which is then submitted to the Federal Bureau of Investigation (FBI). The FBI then converts the NIBRS data into the UCR Traditional Summary Reporting for publication in the annual *Crime in the United States*. Since the data presented in this report is snapshot data queried on April 18, 2011, data queried before or after this date is apt to change and may vary from other reports.

Section IV.

Department Initiatives Update



The Fort Worth Police Department Super Bowl XLV planning initiative paid off in a big way during Super Week's activities and events across the City. Fort Worth hosted the AFC Champion team at the Omni Hotel, as well as, other major events including the Taste of NFL at the Fort Worth Convention Center, and live ESPN broadcasting in Sundance Square. The Department provided security, traffic control and critical communication with various stakeholders to ensure the week was a major success. There were also no delays in team movement despite the adverse weather conditions. Record snow and ice tested the planning efforts, but the situation was well managed due to advance preparedness that was in place by the planning team. The police had positive interaction with our out-of-town guests.

Even though crime was low partially due to the adverse weather, our department's quick response lead to the arrests of offenders in the following categories:

Public Intoxication	31
Fraud/Credit Card Abuse	6
Theft	5
Criminal Trespass	4
Burglary of Vehicle	4
Assaults	3
Narcotic Violations	3
DWI	2
Prostitution	1
Burglary of Residence	1
Miscellaneous Offense	6
<u>Total Arrests</u>	<u>66</u>

The Police Department also coordinated with other city departments and outside agencies to ensure the success of Super Bowl XLV in North Texas.

Security Cameras for FWISD Schools

In FY 2009, the Fort Worth ISD and the Fort Worth Police Department collaborated on a Community Oriented Policing Services, Secure Our Schools (COPS-SOS) Grant with the Department of Justice and was awarded a \$500,000 grant. The FWISD matched these funds with an additional \$500,000 to install security cameras in FWISD high schools and middle schools.

The FWISD is in the process of installing this state-of-the-art video surveillance equipment in all secondary campuses. Approximately 40% of the high school surveillance installations have been completed with more installations scheduled for this summer, including the installations within middle schools.

The cameras assist to deter and quell individual incidents on campus and have already assisted with the retrieval of stolen property that would possibly not have been recovered otherwise. The cameras have led to the arrest of a burglar at a high school.

The funding has also assisted with the purchase of the following:

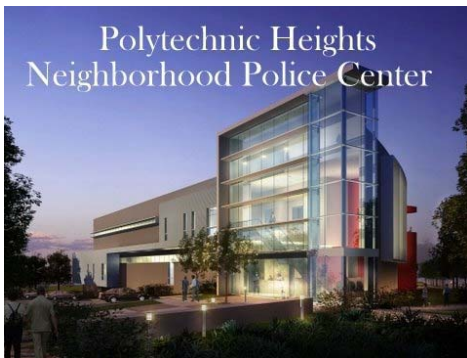
- Laptops for use by the School Security Sergeants to view live surveillance on a daily basis
- Walk through metal detectors to replace units beyond repair, as well as, for the new middle school
- Solar powered graffiti camera, which has already been deployed at multiple sites to deter copper theft and vandalism to campuses.

The program has been very successful. If you would like to learn more about these efforts, please contact Jerry Chandler at 817-392-4219 or Art Cavacos at 817-814-2660.

Polytechnic Heights Neighborhood Center



A ribbon-cutting ceremony was held on March 24, 2011 to celebrate the opening of the award-winning Polytechnic Heights Neighborhood Police Center in east Fort Worth. The 30,074 SF state-of-the-art facility, located at 1100 Nashville, houses the East Division's Patrol offices and the Traffic Division in a new building, but at the same site as what was formerly known as NPD 6. The building has been certified as a Leadership in Energy and Environmental Design (LEED) facility, and now has a much needed large community meeting room. The Center was partially funded by the Crime Control and Prevention District.



Community Policing Highlights

CODE BLUE

In March 2011, a young female with special needs was reported missing, which prompted an impressive response from our Code Blue members. Thirty-three North Division Code Blue groups responded to aid in the search. Although the young female was later found to be safe, the Fort Worth Police Department would like to thank all that worked on this search.

Clergy and Police Alliance (CAPA)

The North Division Clergy and Police Alliance (CAPA) Team experienced record level activity in call outs, ride-ins and meetings—displaying the devotion and commitment of our men and women of faith in North division whose membership continues to grow.

Personal Situational Awareness

Through Personal Situation Awareness presentations provided by officers, attendees are provided with information to help women recognize abusive or predatory behavior in order to avoid relationships with potentially violent offenders. During 1st Quarter 2011, five presentations were held with over 110 attendees. To view a schedule of upcoming events or to request a presentation, please visit www.protectinglives.org