

**2nd Quarter Crime Report
April-June 2011**



**Fort Worth Police Department
Chief Jeffrey W. Halstead**

TABLE OF CONTENTS

<u>SECTION I. UNDERSTANDING CRIME REPORTING</u>	3
1.1 NATIONAL PERSPECTIVE ON REPORTING CRIME	4
1.2 FORT WORTH'S CRIME REPORT	4
1.3 UNDERSTANDING NIBRS FIGURES	5
1.4 SIGNIFICANT METHODOLOGY AND DEFINITION DIFFERENCES	5
<u>SECTION II. NATIONAL INCIDENT BASED REPORTING SYSTEM</u>	6
2.1 2ND QUARTER 2011 CITYWIDE NIBRS CRIME REPORT	7
2.2 2ND QUARTER 2011 CITYWIDE NIBRS CRIME RATE	8
2.3 CRIMES AGAINST PERSON (NIBRS—GROUP "A")	9
2.4 CRIMES AGAINST PROPERTY (NIBRS—GROUP "A")	11
2.5 CRIMES AGAINST SOCIETY (NIBRS—GROUP "A")	12
2.6 OTHER OFFENSES (NIBRS—GROUP "B")	13
2.7 GANG UNIT REPORT	14
2.8 OFFENSES BY COUNCIL DISTRICT	16
<u>SECTION III. DIRECTIONS HOME REPORT</u>	26
<u>SECTION IV. UNIFORM CRIME REPORTING (UCR) TRADITIONAL SUMMARY REPORT...</u>	30
4.1 2ND QUARTER 2011 UCR TRADITIONAL SUMMARY REPORT	31
<u>SECTION V. DEPARTMENT INITIATIVES UPDATE</u>	32

DISCLAIMER: This report provides a snapshot of the Fort Worth Police Department's National Incident-Based Reporting System (NIBRS) data that was queried from the Records Management System (RMS) on July 19, 2011. The Department's RMS is updated regularly based on ongoing investigations, but a snapshot of this data is taken at the point that the Texas Department of Public Safety has reviewed and certified the data so that the Fort Worth Police Department has the ability to provide more detailed data, including information at the Council District level. It should be noted that since this is a snapshot, data queried before or after this date is apt to change and may vary from other reports.

Section I.

Understanding Crime Reporting

1.1 National Perspective on Reporting Crime: Transitioning from Uniform Crime Reporting to National Incident-Based Reporting System

According to the National Incident-Based Reporting System, Volume 1: Data Collection Guidelines, by the U.S. Department of Justice,

“Since the establishment of the Uniform Crime Reporting (UCR) Program in 1930, the volume, diversity, and complexity of crime steadily increased while the UCR Program remained virtually unchanged. Recognizing the need to address crime’s growing challenge, the law enforcement community in the late 1970s called for a thorough study of the UCR Program with the objective of revising the Program to meet law enforcement’s needs into the twenty-first century. The National Incident-Based Reporting System (NIBRS) is the result of that study.”

The FBI began accepting NIBRS data from a handful of agencies in January 1989. As more contributing law enforcement agencies become more knowledgeable about the rich data available through incident-based reporting and as resources permit, more agencies are implementing the NIBRS. Although participation in NIBRS is purely voluntary, based on 2009 data submissions, approximately 44 percent of reporting agencies throughout the nation are NIBRS certified. Until an agency is ready to participate and subsequently becomes certified, it will continue to submit data in accordance with the requirements of the traditional UCR Program. As it is recognized that the transition from the old to the new system will take considerable time, the national UCR Program will continue to collect, process, and publish traditional UCR data. This will be accomplished by collecting data in the old format from agencies not participating in NIBRS and by extracting the traditional summary data from the more comprehensive submissions of agencies participating in NIBRS.

The result will be a continuation of the traditional statistical time series and a gradual phase-in of the newer forms of statistics made possible by NIBRS. This parallel operation of the old and new systems will continue until such time as it is determined that the old system can be discontinued.

1.2 Fort Worth’s Crime Report

Fort Worth understands the importance of collecting and reporting more detailed, accurate, and meaningful incident-based data, and so in January 2006, Fort Worth became certified to participate in the National Incident Based Reporting System (NIBRS) and began reporting NIBRS data to the Texas Department of Public Safety. With the use of the NIBRS, the Fort Worth Police Department now has the capability to generate reports reflecting a multitude of interrelationships among the collected data—enhancing its ability to analyze crime trends and to implement tactical strategies accordingly. NIBRS data is of great value to the City of Fort Worth!

As stated above, in 2009, approximately 44 percent of the reporting agencies throughout the nation were NIBRS certified, and more and more agencies are transitioning to NIBRS. In the meantime, the FBI will continue to report UCR data (by extracting UCR data from NIBRS data) until such time the Uniform Crime Reporting can be discontinued. FBI data is used to identify national and regional crime trends. And although the FBI does not recommend using its data for ranking purposes, it is often used for rankings and at this time is often considered the best available information to compare crime from one jurisdiction to another. Since UCR data is available for all reporting agencies nationwide, it also has value for comparison purposes.

Since one of Fort Worth’s Strategic Goals is to become one of the nation’s safest major cities, the FBI data, along with other third party rankings, are used to determine if we are making progress towards this goal/vision. Therefore, the Fort Worth Police Department sees value in reporting both NIBRS data and UCR data so that elected officials, city leaders and the public can review the detailed crime data, and yet still be able to put it in perspective (in a very general sense) with how Fort Worth compares to other peer cities.

To learn more about the differences between Uniform Crime Reporting and National Incident-Based Reporting System data, please visit the Fort Worth Police Department website at <http://www.fortworthpd.com/crime-information/>

1.3 Understanding NIBRS Figures

NIBRS compiles detailed reports on two types of offenses: Group "A" offenses and Group "B" offenses. The two groupings are based on the amount of reporting required for each. Both incidents and arrests are reported for Group "A" offenses, and only arrests are reported for Group "B" offenses.

The following criteria was used to determine if a crime should be designated as a Group "A" offense:

1. The seriousness or significance of the offense.
2. The frequency or volume of its occurrence.
3. The prevalence of the offense nationwide.
4. The probability of the offense being brought to law enforcement's attention.
5. The likelihood that law enforcement is the best channel for collecting data regarding the offense.
6. The burden placed on law enforcement in collecting data on the offense.
7. The national statistical validity and usefulness of the collected data.
8. The national UCR Program's responsibility to make crime data available not only to law enforcement but to others having a legitimate interest in it.

Group "A" offenses are categorized into one of the three following categories: 1) Crimes Against Person; 2) Crimes Against Property; 3) Crimes Against Society.

- 1) Crimes Against Person = Scores one offense for each victim
- 2) Crimes Against Property = Scores one offense for each distinct operation
(except Motor Vehicle Theft / one offense is counted per stolen vehicle)
- 3) Crime Against Society = Scores one offense for each violation

NIBRS Group A includes the following 22 Offenses:

- Homicide Offenses
- Sex Offenses, Forcible
- Sex Offenses, Non-forcible
- Robbery
- Assault Offenses
- Burglary / Breaking and Entering
- Larceny / Theft Offenses
- Motor Vehicle Theft
- Arson
- Bribery
- Counterfeiting / Forgery
- Destruction / Damage / Vandalism of Property
- Drug / Narcotic Offenses
- Embezzlement
- Extortion / Blackmail
- Fraud Offenses
- Gambling Offenses
- Kidnapping / Abduction
- Pornography / Obscene Material
- Prostitution Offenses
- Stolen Property Offenses
- Weapon Law Violations

UCR Part I includes the following eight offenses: Criminal Homicide, Forcible Rape, Robbery, Aggravated Assault, Burglary, Larceny-Theft, Motor Vehicle Theft, and Arson.

1.4 Significant Methodology and Definition Differences

A significant difference between NIBRS and UCR Traditional Summary Reporting is that for Crimes Against Persons, NIBRS counts the number of victims, while UCR counts the number of incidents, which can result in NIBRS figures being higher than UCR figures depending on the number of victims involved in the incidents. The definitions for Part 1 offenses used in Summary Reporting are different than the offense definitions used by the National Incident Based Reporting System (NIBRS). Visit <http://www.fortworthpd.com/crime-information/> for more details about the differences between NIBRS and UCR Traditional Summary Reporting.

Section II.

National Incident Based Reporting System (NIBRS)

2nd Quarter 2011 Citywide NIBRS Crime Report

2.1 Overall citywide crime has decreased 1.6%, with notable decreases in murder (-42.9%) and intimidation (-13%) attributing to an overall -1.9% decrease in Crimes Against Persons compared to 2nd Quarter last year. Crimes Against Property increased 3.2% citywide with counterfeiting/forgery, burglary and theft from building offenses attributing to this increase. The following table provides a comprehensive list of Fort Worth's citywide NIBRS Group A offenses by Crimes Against Persons, Crimes Against Property, and Crimes Against Society. These trends and enforcement efforts will also be explained in more detail throughout this report.

Figure 1—2nd Quarter 2011 Citywide NIBRS Group A Offenses

Type of Offense			Number of Offenses			Year-to-Date (January - June)		
			2nd Quarter 2011	2nd Quarter 2010	% Change	2011	2010	% Change
Crimes Against Persons (NIBRS - Group A)	13A - C	Assault Offenses	3,335	3,397	-1.8%	6,067	5,983	1.4%
	13A	Aggravated Assault	837	735	13.9%	1,402	1,267	10.7%
	13B	Simple Assault	2,230	2,354	-5.3%	4,152	4,160	-0.2%
	13C	Intimidation	268	308	-13.0%	513	556	-7.7%
	100	Kidnapping/Abduction	30	26	15.4%	58	48	20.8%
	09A-B	Murder & Nonnegligent Manslaughter	12	21	-42.9%	20	33	-39.4%
	11A - D	Sex Offenses, Forcible	224	226	-0.9%	466	409	13.9%
	11A	Forcible Rape	94	84	11.9%	173	153	13.1%
	11B-D	Other	130	142	-8.5%	293	256	14.5%
	36A - B	Sex Offenses, Nonforcible	0	0	---	0	0	---
Crimes Against Persons Subtotal			3,601	3,670	-1.9%	6,611	6,473	2.1%
Crimes Against Property (NIBRS - Group A)	200	Arson	26	37	-29.7%	61	64	-4.7%
	510	Bribery	2	2	0.0%	5	2	150.0%
	220	Burglary/Breaking & Entering	2,786	2,444	14.0%	4,752	4,495	5.7%
		Residence	2,213	1,872	18.2%	3,810	3,362	13.3%
		Business	347	319	8.8%	564	663	-14.9%
		Other	226	253	-10.7%	378	470	-19.6%
	250	Counterfeiting/Forgery	164	140	17.1%	309	316	-2.2%
	290	Destruction/Damage/Vandalism of Property (excluding arson)	2,453	2,618	-6.3%	4,738	4,889	-3.1%
	270	Embezzlement	40	41	-2.4%	81	81	0.0%
	210	Extortion/Blackmail	0	0	---	0	0	---
	26A - E	Fraud Offenses (excluding counterfeiting/forgery & bad checks)	1,131	1,177	-3.9%	2,238	2,333	-4.1%
	23A-H	Larceny/Theft Offenses - Total	6,224	5,922	5.1%	11,204	11,272	-0.6%
	23A & B	Pocket-picking & Purse-snatching	113	122	-7.4%	197	209	-5.7%
	23C	Shoplifting	1,182	1,148	3.0%	2,181	2,306	-5.4%
	23D	Theft from Building	69	50	38.0%	110	97	13.4%
	23E	Theft from Coin-Operated Machine or Device	30	30	0.0%	60	64	-6.3%
	23F	Theft from Motor Vehicle	1,535	1,596	-3.8%	2,791	2,974	-6.2%
	23G	Theft of Motor Vehicle Parts or Accessories	1,060	1,102	-3.8%	1,958	2,120	-7.6%
	23H	All Other Larceny	2,235	1,874	19.3%	3,907	3,502	11.6%
	240	Motor Vehicle Theft	579	550	5.3%	1,071	1,049	2.1%
120	Robbery	312	363	-14.0%	556	682	-18.5%	
280	Stolen Property Offenses	1	3	-66.7%	2	4	-50.0%	
Crimes Against Property Subtotal			13,718	13,297	3.2%	25,017	25,187	-0.7%
Crimes Against Society (NIBRS - Group A)	35A	Drug/Narcotic Violations (excluding DUI)	964	899	7.2%	1,870	1,785	4.8%
	39A - D	Gambling Offenses	0	0	---	0	0	---
	370	Pornography/Obscene Material	0	0	---	0	0	---
	40A	Prostitution	171	136	25.7%	282	236	19.5%
	520	Weapon Law Violations	129	135	-4.4%	254	247	2.8%
Crimes Against Society Subtotal			1,264	1,170	8.0%	2,406	2,268	6.1%
NIBRS Group A Total			18,583	18,137	2.5%	34,034	33,928	0.3%
NIBRS Group A & B Total			23,502	23,873	-1.6%	43,707	44,788	-2.4%

For NIBRS offense definitions, go to www.fortworthpd.com/crime-information/

2nd Quarter 2011 Citywide NIBRS Crime Rate

2.2 The following table displays the crime rate of each NIBRS Group A offense per 100,000 population.

Figure 2 - 2nd Quarter 2011 Crime Rate Per 100,000 Population

Type of Offense			NIBRS Crime Rate / 100,000 Population		
			2nd Qtr 2011 Crime Rate	2nd Qtr 2010 Crime Rate	Rate Comparison
Crimes Against Persons (NIBRS - Group A)	13A - C	Assault Offenses	446.9	458.3	-2.5%
	13A	Aggravated Assault	112.2	99.2	13.1%
	13B	Simple Assault	298.8	317.6	-5.9%
	13C	Intimidation	35.9	41.6	-13.6%
	100	Kidnapping/Abduction	4.0	3.5	14.6%
	09A-B	Murder & Nonnegligent Manslaughter	1.6	2.8	-43.2%
	11A - D	Sex Offenses, Forcible	30.0	30.5	-1.6%
	11A	Forcible Rape	12.6	11.3	11.1%
	11B-D	Other	17.4	19.2	-9.1%
Crimes Against Persons Subtotal			482.5	495.1	-2.5%
Crimes Against Property (NIBRS - Group A)	200	Arson	3.5	5.0	-30.2%
	510	Bribery	0.3	0.3	-0.7%
	220	Burglary/Breaking & Entering	373.3	329.7	13.2%
		Residence	296.5	252.6	17.4%
		Business	46.5	43.0	8.0%
		Other	30.3	34.1	-11.3%
	250	Counterfeiting/Forgery	22.0	18.9	16.3%
	290	Destruction/Damage/Vandalism of Property (excluding arson)	328.7	353.2	-6.9%
	270	Embezzlement	5.4	5.5	-3.1%
	210	Extortion/Blackmail	0.0	0.0	---
	26A - E	Fraud Offenses	151.5	158.8	-4.6%
	23A-H	Larceny/Theft Offenses - Total	834.0	799.0	4.4%
	23A & B	Pocket-picking & Purse-snatching	15.1	16.5	-8.0%
	23C	Shoplifting	158.4	154.9	2.3%
	23D	Theft from Building	9.2	6.7	37.1%
	23E	Theft from Coin-Operated Machine or Device	4.0	4.0	-0.7%
	23F	Theft from Motor Vehicle	205.7	215.3	-4.5%
	23G	Theft of Motor Vehicle Parts or Accessories	142.0	148.7	-4.5%
	23H	All Other Larceny	299.5	252.8	18.5%
240	Motor Vehicle Theft	77.6	74.2	4.6%	
120	Robbery	41.8	49.0	-14.6%	
280	Stolen Property Offenses	0.1	0.4	-66.9%	
Crimes Against Property Subtotal			1838.2	1794.0	2.5%
Crimes Against Society (NIBRS - Group A)	35A	Drug/Narcotic Violations (excluding DUI)	129.2	121.3	6.5%
	39A - D	Gambling Offenses	0.0	0.0	---
	370	Pornography/Obscene Material	0.0	0.0	---
	40A	Prostitution	22.9	18.3	24.9%
	520	Weapon Law Violations	17.3	18.2	-5.1%
Crimes Against Society Subtotal			169.4	157.9	7.3%
Group A Total			2490.1	2447.0	1.8%
Group A & B Total			3149.2	3220.8	-2.2%

Note: The crime rate data as listed above uses the best available population estimate data. The NCTCOG's 2011 population estimate of 746,290 was used for the 2011 crime rates, while the 2010 Census population estimate of 741,206 was used for the 2010 crime rates.

2.3 Crimes Against Person (NIBRS - Group A)

Crimes Against Persons decreased 1.9% citywide, with 3,601 offenses (victims) reported in 2nd Quarter 2011 compared to 3,670 offenses (victims) reported in 2nd Quarter 2010. Murder and intimidation attributed the most to this decrease, while aggravated assaults, kidnapping and forcible rapes increased during the 2nd Quarter. Of all the Crimes Against Persons, approximately 51% were domestic-related.

Figure 3 — 1st Quarter 2011, Citywide NIBRS Group A, Crimes Against Person

Type of Offense			Number of Offenses			Year-to-Date (January - June)		
			2nd Quarter 2011	2nd Quarter 2010	% Change	2011	2010	% Change
Crimes Against Persons (NIBRS - Group A)	13A - C	Assault Offenses	3,335	3,397	-1.8%	6,067	5,983	1.4%
	13A	Aggravated Assault	837	735	13.9%	1,402	1,267	10.7%
	13B	Simple Assault	2,230	2,354	-5.3%	4,152	4,160	-0.2%
	13C	Intimidation	268	308	-13.0%	513	556	-7.7%
	100	Kidnapping/Abduction	30	26	15.4%	58	48	20.8%
	09A-B	Murder & Nonnegligent Manslaughter	12	21	-42.9%	20	33	-39.4%
	11A - D	Sex Offenses, Forcible	224	226	-0.9%	466	409	13.9%
	11A	Forcible Rape	94	84	11.9%	173	153	13.1%
	11B-D	Other	130	142	-8.5%	293	256	14.5%
	36A - B	Sex Offenses, Nonforcible	0	0	0.0%	0	0	0.0%
Crimes Against Persons Subtotal			3,601	3,670	-1.9%	6,611	6,473	2.1%

* The crime categories are listed in alphabetical order for ease of reference rather than in order of their importance. For NIBRS offense definitions, go to www.fortworthpd.com/crime-information/

Most Crimes Against Person victims are victims of simple assaults, which is defined as an unlawful physical attack by one person upon another where neither the offender displays a weapon, nor the victim suffers obvious severe or aggravated bodily injury. Simple assaults decreased -5.3% this quarter, and overall approximately 60% were domestic-related. These are followed by aggravated assaults. Aggravated assaults increased 13.9%. Approximately 37% of the aggravated assaults were domestic-related. Approximately 55% occurred within a residence, 23% near a roadway, 7% in a parking lot or parking garage, and 3% in a bar or night club. A total of 218 aggravated assault arrests were made during the 2nd Quarter.

Intimidation is also an assault offense, which is defined as to unlawfully place another person in reasonable fear of bodily harm through the use of threatening words and/or other conduct but without displaying a weapon or subjecting the victim to actual physical attack. Intimidation offenses decreased -13% compared to 2nd Quarter 2010.

Forcible rape offenses increased 11.9% with 10 more offenses in 2nd Quarter 2011 compared to 2nd Quarter 2010. Of the 94 forcible rape offenses, the majority were known-offender related, and 42% were victims 17 years of age or under. There is no indication of any serial offenders.

The "Other" forcible sex offenses as listed below includes forcible sodomy, sexual assault with an object, and forcible fondling, which decreased 8.5% this quarter compared to 2nd Quarter 2010. 42% of the "Other" forcible sex offenses reported are incidents that occurred in prior reporting periods, but were not reported until now., and approximately 87% involve victims 17 years of age or under.

During the 2nd Quarter 2011, the Fort Worth Police Department also investigated an Improper Relationship involving a teacher and student from Austin that took place during a field trip to Fort Worth. The teacher was arrested in Austin, after an investigation was completed by a Fort Worth detective from the Sex Crimes Unit.

2.3 Crimes Against Person (NIBRS - Group A) Continued...

Kidnapping/Abduction increased 15.4% with four more offenses in 2nd Quarter 2011 compared 2nd Quarter 2010. It is important to understand what is included in this count.

Kidnapping/Abduction is defined by the National Incident Based Reporting System as the unlawful seizure, transportation, and/or detention of a person against his/her will or of a minor without the consent of his/her custodial parent or legal guardian.

The Texas Penal Code breaks this definition out further by unlawful restraint, kidnapping, aggravated kidnapping, and unlawful transport. Please refer to Texas Penal Code Title 5, Chapter 20 for full definitions, but below are abbreviated definitions of each:

- **Unlawful restraint** - Intentionally or knowingly restrains another person....
Restrain—Restrict a person’s movements without consent, so as to interfere substantially with the person’s liberty, by moving the person from one place to another or by confining the person. Restraint without consent is accomplished if by force, intimidation, or deception or any means...
- **Kidnapping**—Intentionally or knowingly abducts another person...not coupled with intent to use or to threaten to use deadly force...the actor was a relative of the person abducted...
- **Aggravated Kidnapping**—Intentionally or knowingly abducts another person with the intent to hold him for ransom or reward...use him as a shield or hostage...inflict bodily injury...uses or exhibits a deadly weapon....
- **Unlawful Transport**—For pecuniary benefit transports an individual in a manner that is designed to conceal the individual from...law enforcement authorities...and creates a substantial likelihood that the individual will suffer serious bodily injury or death.

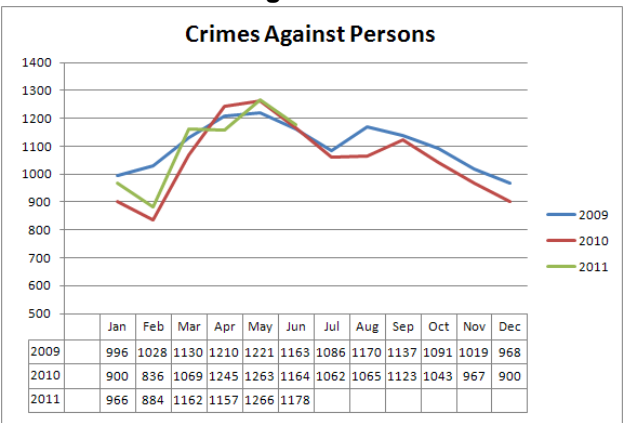
Of the 30 kidnapping offenses this quarter, there were 18 unlawful restraints, 6 kidnappings, and 6 aggravated kidnappings. 60% were either domestic or known suspect-related. The majority of domestic offenses are related to dating or child custody issues. All victims were recovered. No deaths resulted from any of the kidnappings.

There were twelve Murder and Non-Negligent Manslaughter victims, which is a 42.9% decrease citywide compared to 2nd Quarter 2010. Seven of the twelve cases have had dispositions filed, and one case was closed by exceptional means. The motives of these murders range from being domestic-related, to robbery/narcotic, to arguments. One case in particular was from an incident that occurred in 1985, in which the victim was shot during the original offense, but died in April 2011. Delbert Teague was convicted and sentenced to death for his involvement in the offense and was executed in 1998.

A cold case was also solved this quarter. In September of 1994, a female body was found by the side of the road. The autopsy revealed that the victim had been strangled and sexually assaulted. Although some DNA test had been previously tested and compared to a possible suspect, the samples were not a match. The investigator identified that the fingernail clippings were not previously processed for DNA, so the fingernail clippings were processed and were a match to the

original suspect’s DNA profile. Juan Segundo is currently on Texas death row for the rape and murder of an eleven year old girl. Segundo has been previously matched to two additional victims bringing his total to four sexual assault murders in Fort Worth ranging from 1986-1995. Although no formal charges will be filed against Juan Segundo in this case, it brought closure to the victim’s family.

Figure 4 — 2009-2011 Comparison of Citywide Crimes Against Person



2.4 Crimes Against Property (NIBRS - Group A)

Crimes Against Property increased 3.2% citywide, with 13,718 offenses reported in 2nd Quarter 2011 compared to 13,297 offenses reported in 2nd Quarter 2010. Counterfeiting/forgery (17%), burglary/breaking & entering (14%), motor vehicle theft (5.3%) and larceny theft offenses (5.1%) attributed to this increase. Also notable is the decrease in arson, robbery and destruction/vandalism of property this quarter compared to 2nd Quarter 2010.

Figure 5 — 2nd Quarter 2011, Citywide NIBRS Group A, Crimes Against Property

Type of Offense			Number of Offenses			Year-to-Date (January - June)			
			2nd Quarter 2011	2nd Quarter 2010	% Change	2011	2010	% Change	
Crimes Against Property (NIBRS - Group A)	200	Arson	26	37	-29.7%	61	64	-4.7%	
	510	Bribery	2	2	0.0%	5	2	150.0%	
	220	Burglary/Breaking & Entering	2,786	2,444	14.0%	4,752	4,495	5.7%	
		Residence	2,213	1,872	18.2%	3,810	3,362	13.3%	
		Business	347	319	8.8%	564	663	-14.9%	
		Other	226	253	-10.7%	378	470	-19.6%	
	250	Counterfeiting/Forgery	164	140	17.1%	309	316	-2.2%	
	290	Destruction/Damage/Vandalism of Property (excluding arson)	2,453	2,618	-6.3%	4,738	4,889	-3.1%	
	270	Embezzlement	40	41	-2.4%	81	81	0.0%	
	210	Extortion/Blackmail	0	0	0.0%	0	0	0.0%	
	26A - E	Fraud Offenses (excluding counterfeiting/forgery & bad checks)	1,131	1,177	-3.9%	2,238	2,333	-4.1%	
	23A-H	Larceny/Theft Offenses - Total	6,224	5,922	5.1%	11,204	11,272	-0.6%	
	23A & B	Pocket-picking & Purse-snatching	113	122	-7.4%	197	209	-5.7%	
	23C	Shoplifting	1,182	1,148	3.0%	2,181	2,306	-5.4%	
	23D	Theft from Building	69	50	38.0%	110	97	13.4%	
	23E	Theft from Coin-Operated Machine or Device	30	30	0.0%	60	64	-6.3%	
	23F	Theft from Motor Vehicle	1,535	1,596	-3.8%	2,791	2,974	-6.2%	
	23G	Theft of Motor Vehicle Parts or Accessories	1,060	1,102	-3.8%	1,958	2,120	-7.6%	
	23H	All Other Larceny	2,235	1,874	19.3%	3,907	3,502	11.6%	
	240	Motor Vehicle Theft	579	550	5.3%	1,071	1,049	2.1%	
	120	Robbery	312	363	-14.0%	556	682	-18.5%	
	280	Stolen Property Offenses	1	3	-66.7%	2	4	-50.0%	
	Crimes Against Property Subtotal			13,718	13,297	3.2%	25,017	25,187	-0.7%

The crime categories are listed below in alphabetical order for ease of reference rather than in order of their importance.

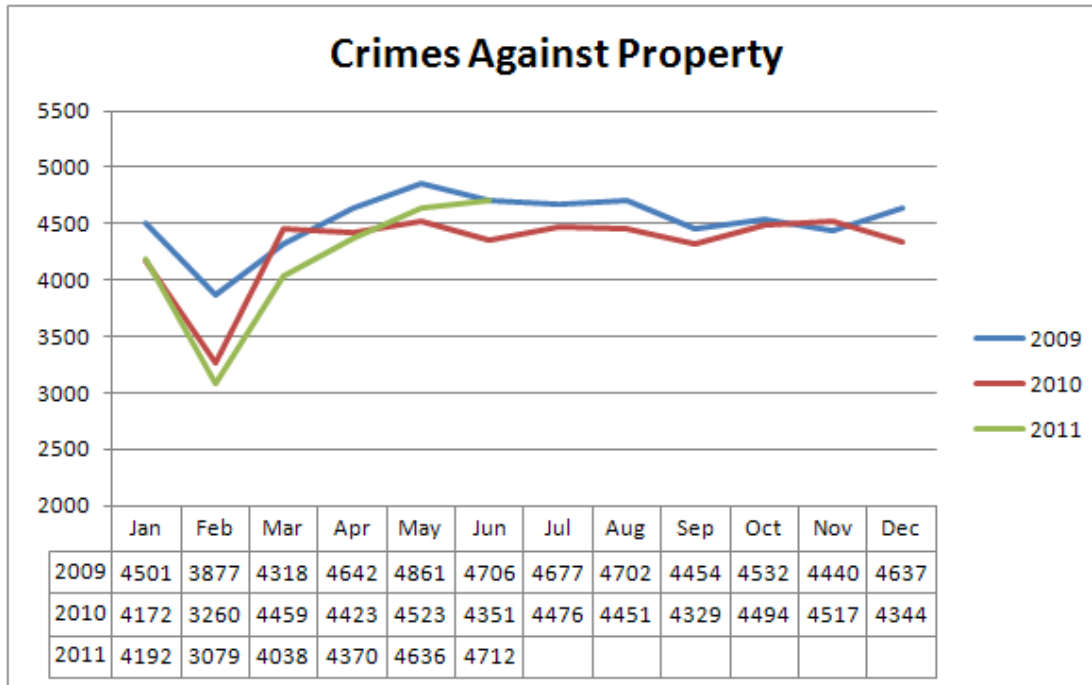
For NIBRS offense definitions, go to www.fortworthpd.com/crime-information/

As our country continues to struggle in these terrible economic times, and while the price of metals are high, property crime increases are occurring throughout the United States. The Fort Worth Police Department is implementing several tactics city-wide to address this issue.

During the 2nd Quarter, East Division increased participation in the Crime Watch Program, made 601 resident contacts, established 359 Crime Watch contacts that are now on the NPO email distribution list, and distributed 2,976 crime alert fliers. More details about this effort can be found in *Section V. Department Initiatives Update* of this report.

Citizens on Patrol have also been instrumental in several burglaries and robberies. By taking good descriptions, talking with neighborhood residents, and collaborating with patrol, their efforts led to the arrest of several individuals during the 2nd Quarter.

Figure 6 — 2009-2011 Comparison of Citywide Crimes Against Property



2.5 Crimes Against Society (NIBRS—Group A)

Crimes Against Society figures are an indication of the department’s enforcement efforts and are counted one offense per violation. Enforcement efforts have led to an overall 8.0% increase in offenses/reports related to Crimes Against Society.

Figure 7 — 2nd Quarter 2011, Citywide NIBRS Group A, Crimes Against Society

Type of Offense			Number of Offenses			Year-to-Date (January - June)		
			2nd Quarter 2011	2nd Quarter 2010	% Change	2011	2010	% Change
Crimes Against Society (NIBRS - Group A)	35A	Drug/Narcotic Violations (excluding DUI)	964	899	7.2%	1,870	1,785	4.8%
	39A - D	Gambling Offenses	0	0	0.0%	0	0	0.0%
	370	Pornography/Obscene Material	0	0	0.0%	0	0	0.0%
	40A	Prostitution	171	136	25.7%	282	236	19.5%
	520	Weapon Law Violations	129	135	-4.4%	254	247	2.8%
Crimes Against Society Subtotal			1,264	1,170	8.0%	2,406	2,268	6.1%

The crime categories are listed below in alphabetical order for ease of reference rather than in order of their importance. For NIBRS offense definitions, go to www.fortworthpd.com/crime-information/

During the 2nd Quarter, the HIDTA/DEA Task Force presented two DEA cases to the Federal Grand Jury, of which returned indictments on twenty-four suspects involved in the distribution of narcotics in the Dallas/Fort Worth area. The officers then set out to arrest these suspects. Overall the HIDTA/DEA Task Force made twenty-eight arrests, seized six guns, \$289,000 in cash, and more than 500 grams of drugs. Through the West Division Crime Suppression Initiative, the Narcotics Unit made fourteen arrests through safety checkpoints, nineteen arrests through special operations, seized seven guns, gained four confidential informants, and obtained five warrants. See details in Section V. of this report.

2.6 Other Offenses (NIBRS—Group B)

Group “B” offenses are reported only when an arrest is involved. A Group “B” Arrest Report does not include incident data but uses only data elements that describe the arrestee and the circumstances of the arrest. Group “B” offenses decreased 14.2% overall with decreases in all offense types.

Figure 8—2nd Quarter 2011, Citywide NIBRS Group B, Other Offenses

Type of Offense			Number of Offenses/Arrests			CUMULATIVE COMPARISON (January - June)		
			2nd Quarter 2011	2nd Quarter 2010	% Change	2011	2010	% Change
Other Offenses (NIBRS- Group B)	90A	Bad Checks	0	3	-100.0%	1	3	-66.7%
	90B	Curfew/Loitering/Vagrancy Violations	64	142	-54.9%	110	239	-54.0%
	90C	Disorderly Conduct	338	468	-27.8%	658	930	-29.2%
	90D	Driving Under the Influence	359	431	-16.7%	705	957	-26.3%
	90E	Drunkenness	799	963	-17.0%	1,621	1,724	-6.0%
	90F	Family Offenses, Nonviolent	236	266	-11.3%	429	509	-15.7%
	90G	Liquor Law Violations	260	263	-1.1%	496	506	-2.0%
	90H	Peeping Tom	1	3	-66.7%	2	8	-75.0%
	90I	Runaway	428	455	-5.9%	821	900	-8.8%
	90J	Trespass of Real Property	224	232	-3.4%	457	425	7.5%
90Z	All Other Offenses	2,210	2,510	-12.0%	4,373	4,659	-6.1%	
GROUP B TOTAL			4,919	5,736	-14.2%	9,673	10,860	-10.9%
NIBRS Total (Group A & B)			23,502	23,873	-1.6%	43,707	44,788	-2.4%

The crime categories are listed below in alphabetical order for ease of reference rather than in order of their importance.

For NIBRS offense definitions, go to www.fortworthpd.com/crime-information/

During the 2nd Quarter, the Information Management Division (IMD) analyzed five-year crime trend data and identified a crime suppression target area within West Division. The IMD gathered and analyzed intelligence and designed tactical operations plans that were carried out by West Division and specialized units—with the ultimate goal of reducing crime before the anticipated trend began. A full article about this crime suppression initiative can be viewed within *Section V. Department Initiatives Update* within this report.

Below summarizes the West Division Crime Suppression efforts as they relate to Group B offenses:

Teen Curfew Detail (10 days)

- Curfew Arrests 50
- Felony Arrests 5
- Misdemeanor Arrests 11
- Citations 78

2.7 Gang Unit Report

A total of 225 gang-related incidents occurred in the 2nd Quarter 2011 compared to 329 gang-related incidents in 2nd Quarter 2010—a 31.6% decrease in gang crime.

It should be noted that a single incident may involve multiple offenses. For example, an incident may involve a narcotic violation and an assault offense, which would be documented within one report and then flagged as a gang-related incident. The table below shows the number of offenses within the gang-related incident reports.

What is Gang-Related Crime?

Gang-Related Crime is any criminal act, including but not limited to those, involving gang members or gang associates committed for the benefit or furtherance of any criminal gang.

Figure 9 - 2nd Quarter 2011, Gang-Related Offenses

Type of Offense			Number of Gang-Related Offenses			CUMULATIVE COMPARISON (January - February)		
			2nd Quarter 2011	2nd Quarter 2010	% Change	2011	2010	% Change
Crimes Against Person	13A-C	Assault Offenses	55	77	-28.6%	106	140	-24.3%
	100	Kidnapping	0	0	---	1	2	-50.0%
	09A	Murder & Non-negligent Manslaughter	0	3	-100.0%	0	4	-100.0%
	11A-D	Sex Offenses, Forcible	1	0	---	1	1	0.0%
Crimes Against Property	200	Arson Incidents	0	0	---	1	0	---
	220	Burglary / Breaking & Entering	0	5	-100.0%	1	9	-88.9%
	250	Counterfeiting/Forgery	0	1	-100.0%	1	1	0.0%
	290	**Destruction/Damage/Vandalism of Property	53	85	-37.6%	106	184	-42.4%
	23A-H	Larceny Theft	8	5	60.0%	12	8	50.0%
	240	Motor Vehicle Theft	0	3	-100.0%	1	3	-66.7%
Crimes Against Society	120	Robbery	8	8	0.0%	16	16	0.0%
	35A	Drug Narcotic Violation	58	71	-18.3%	108	139	-22.3%
Other	520	Weapon Law Violation	21	29	-27.6%	43	50	-14.0%
	90A-Z	Other	46	71	-35.2%	83	147	-43.5%

*In the 2nd Quarter 2011, there were a total of twelve acts of deadly conduct stemming from aggravated assault and vandalism of property incidents compared to eleven acts of deadly conduct in 2nd Quarter 2010.

**Of the 53 Destruction/Damage/Vandalism of Property incidents, 37 or 70% were gang graffiti-related.

Figure 10 - 2nd Quarter 2011 Gang-Related Arrests By Division

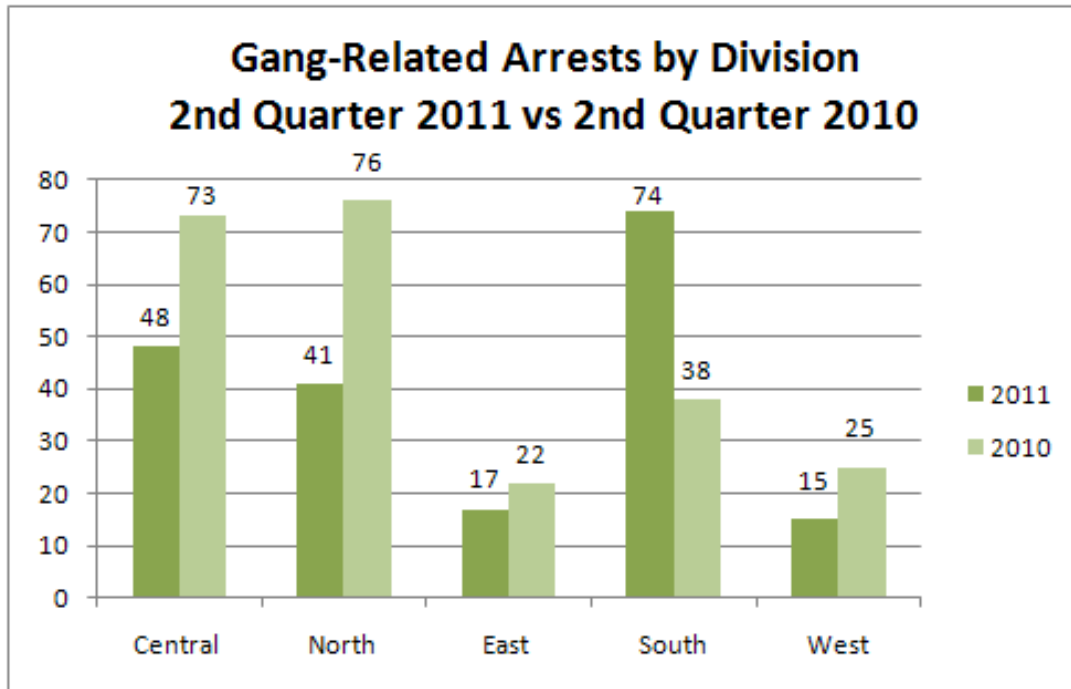
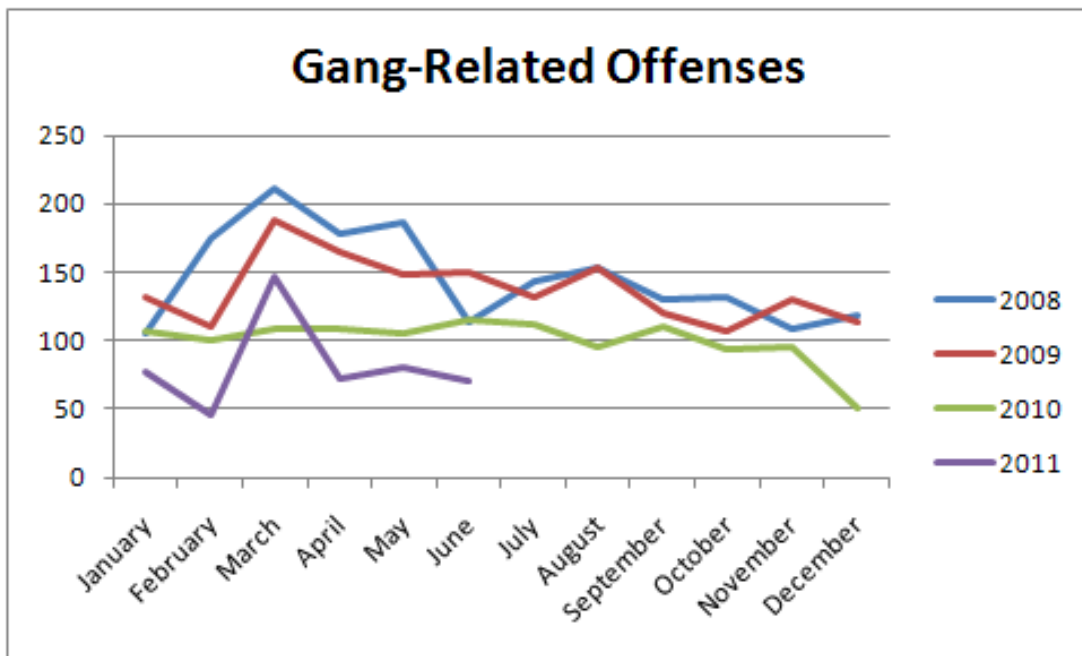


Figure 11 - 2008-2011 Comparison of Citywide Gang-Related Offenses



2.8 Offenses By Council District

Figure 12—Summary of Offenses By Council District

Type of Offense			2nd Quarter - Number of Offenses By Council District							Unknown Location*	Citywide	
			Council District 2 Espino	Council District 3 Zimmerman	Council District 4 Scarth	Council District 5 Moss	Council District 6 Jordan	Council District 7 Burdette	Council District 8 Hicks			Council District 9 Burns
Crimes Against Persons (NIBRS - Group A)	13A - C	Assault Offenses	431	322	329	465	358	458	595	377	0	3,335
	13A	Aggravated Assault	127	70	74	123	67	86	184	106	0	837
	13B	Simple Assault	280	229	231	306	260	331	351	242	0	2,230
	13C	Intimidation	24	23	24	36	31	41	60	29	0	268
	100	Kidnapping/Abduction	5	4	3	4	2	4	6	2	0	30
	09A-B	Murder & Nonnegligent Manslaughter	2	1	1	4	3	0	1	0	0	12
	11A - D	Sex Offenses, Forcible	39	21	21	34	22	27	40	19	1	224
	11A	Forcible Rape	12	11	9	12	4	11	24	10	1	94
	11B-D	Other	27	10	12	22	18	16	16	9	0	130
36A - B	Sex Offenses, Nonforcible	0	0	0	0	0	0	0	0	0	0	
Crimes Against Persons Subtotal			477	348	354	507	385	489	642	398	1	3,601
Crimes Against Property (NIBRS - Group A)	200	Arson	1	3	0	6	5	2	6	3	0	26
	510	Bribery	1	0	0	0	1	0	0	0	0	2
	220	Burglary/Breaking & Entering	365	279	356	523	277	271	446	265	4	2,786
		Residence	261	226	279	446	242	226	342	190	1	2,213
		Business	58	34	54	38	23	26	61	53	0	347
		Other	46	19	23	39	12	19	43	22	3	226
	250	Counterfeiting/Forgery	21	31	29	11	17	13	17	25	0	164
	290	Destruction/Damage/Vandalism of Property (excluding arson)	352	243	291	314	286	319	369	276	3	2,453
	270	Embezzlement	3	9	4	6	3	6	6	3	0	40
	210	Extortion/Blackmail	0	0	0	0	0	0	0	0	0	0
	26A - E	Fraud Offenses (excluding counterfeiting/forgery & bad checks)	159	150	148	122	154	165	92	134	7	1,131
	23A-H	Larceny/Theft Offenses - Total	1,001	790	710	606	702	905	733	770	7	6,224
	23A & B	Pocket-picking & Purse-snatching	9	24	10	15	8	10	25	12	0	113
	23C	Shoplifting	109	216	156	55	237	188	71	149	1	1,182
	23D	Theft from Building	12	2	14	5	5	11	4	16	0	69
	23E	Theft from Coin-Operated Machine or Device	5	7	2	2	2	6	1	5	0	30
	23F	Theft from Motor Vehicle	291	198	178	143	164	251	144	163	3	1,535
23G	Theft of Motor Vehicle Parts or Accessories	201	116	120	109	106	156	101	149	2	1,060	
23H	All Other Larceny	374	227	230	277	180	283	387	276	1	2,235	
240	Motor Vehicle Theft	82	72	63	88	44	54	93	81	2	579	
120	Robbery	26	32	16	55	36	25	79	43	0	312	
280	Stolen Property Offenses	0	0	0	0	1	0	0	0	0	1	
Crimes Against Property Subtotal			2,011	1,609	1,617	1,731	1,526	1,760	1,841	1,600	23	13,718
Crimes Against Society (NIBRS - Group A)	35A	Drug/Narcotic Violations (excluding DUI)	160	93	77	117	88	80	214	124	11	964
	39A - D	Gambling Offenses	0	0	0	0	0	0	0	0	0	0
	370	Pornography/Obscene Material	0	0	0	0	0	0	0	0	0	0
	40A	Prostitution	4	4	1	22	0	5	122	12	1	171
	520	Weapon Law Violations	25	12	10	18	9	11	24	19	1	129
Crimes Against Society Subtotal			189	109	88	157	97	96	360	155	13	1,264
Total Group A			2,677	2,066	2,059	2,395	2,008	2,345	2,843	2,153	37	18,583

"Unknown Locations" are reports in which an address was entered by an officer and is currently being verified; and therefore is not assigned to a specific Council District at the time of this report.

View a [Council District Map](#). For NIBRS offense definitions, go to www.fortworthpd.com/crime-information/

Figure 13 - Fort Worth City Council District Map

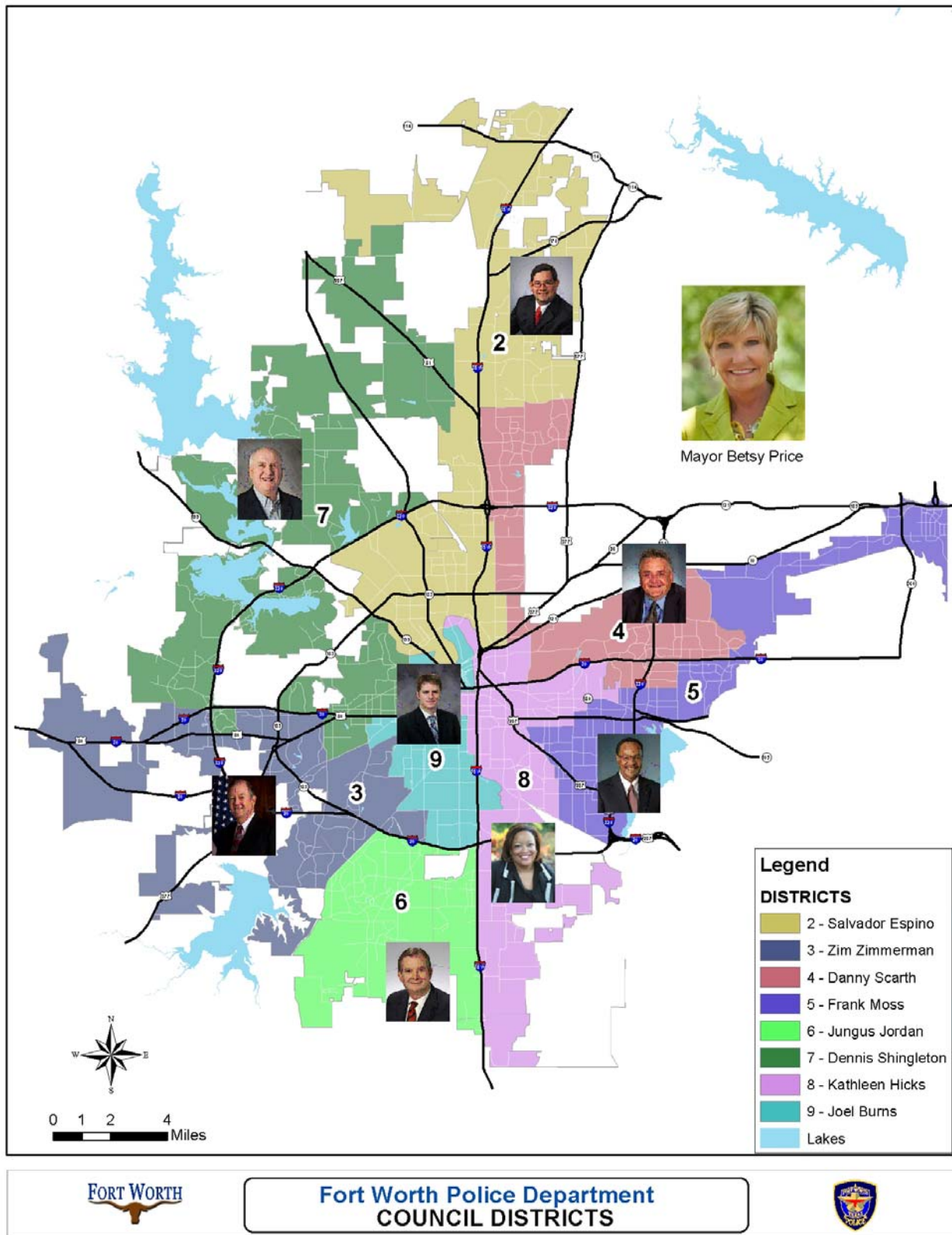


Figure 14—Offenses Reported in Council District 2

	NIBRS Code	Types of Offenses	Number of Offenses 2nd Quarter 2011			Number of Offenses Quarterly Comparison		
			Council District 2 Espino	Citywide	% Total	2nd Quarter 2011	2nd Quarter 2010	% Change
Crimes A against Persons (NIBRS - Group A)	13A - C	Assault Offenses	431	3,335	12.9%	431	483	-10.8%
	13A	Aggravated Assault	127	837	15.2%	127	106	19.8%
	13B	Simple Assault	280	2,230	12.6%	280	336	-16.7%
	13C	Intimidation	24	268	9.0%	24	41	-41.5%
	100	Kidnapping/Abduction	5	30	16.7%	5	7	-28.6%
	09A-B	Murder & Nonnegligent Manslaughter	2	12	16.7%	2	3	-33.3%
	11A - D	Sex Offenses, Forcible	39	224	17.4%	39	32	21.9%
	11A	Forcible Rape	12	94	12.8%	12	7	71.4%
	11B-D	Other	27	130	20.8%	27	25	8.0%
	36A - B	Sex Offenses, Nonforcible	0	0	---	0	0	---
Crimes Against Persons Subtotal			477	3,601	13.2%	477	525	-9.1%
Crimes A against Property (NIBRS - Group A)	200	Arson	1	26	3.8%	1	6	-83.3%
	510	Bribery	1	2	50.0%	1	0	---
	220	Burglary/Breaking & Entering	365	2,786	13.1%	365	276	32.2%
		Residence	261	2,213	11.8%	261	202	29.2%
		Business	58	347	16.7%	58	45	28.9%
		Other	46	226	20.4%	46	29	58.6%
	250	Counterfeiting/Forgery	21	164	12.8%	21	8	162.5%
	290	Destruction/Damage/Vandalism of Property (excluding arson)	352	2,453	14.3%	352	391	-10.0%
	270	Embezzlement	3	40	7.5%	3	9	-66.7%
	210	Extortion/Blackmail	0	0	---	0	0	---
	26A - E	Fraud Offenses	159	1,131	14.1%	159	158	0.6%
	23A-H	Larceny/Theft Offenses - Total	1,001	6,224	16.1%	1,001	889	12.6%
	23A & B	Pocket-picking & Purse-snatching	9	113	8.0%	9	12	-25.0%
	23C	Shoplifting	109	1,182	9.2%	109	123	-11.4%
	23D	Theft from Building	12	69	17.4%	12	10	20.0%
	23E	Theft from Coin-Operated Machine or Device	5	30	16.7%	5	4	25.0%
	23F	Theft from Motor Vehicle	291	1,535	19.0%	291	256	13.7%
	23G	Theft of Motor Vehicle Parts or Accessories	201	1,060	19.0%	201	203	-1.0%
	23H	All Other Larceny	374	2,235	16.7%	374	281	33.1%
	240	Motor Vehicle Theft	82	579	14.2%	82	76	7.9%
120	Robbery	26	312	8.3%	26	34	-23.5%	
280	Stolen Property Offenses	0	1	0.0%	0	2	-100.0%	
Crimes Against Property Subtotal			2,011	13,718	14.7%	2,011	1,849	8.8%
Crimes A against Society (NIBRS - Group A)	35A	Drug/Narcotic Violations (excluding DUI)	160	964	16.6%	160	167	-4.2%
	39A - D	Gambling Offenses	0	0	---	0	0	---
	370	Pornography/Obscene Material	0	0	---	0	0	---
	40A	Prostitution	4	171	2.3%	4	9	-55.6%
	520	Weapon Law Violations	25	129	19.4%	25	28	-10.7%
Crimes Against Society Subtotal			189	1,264	15.0%	189	204	-7.4%
Total Group A			2,677	18,583	14.4%	2,677	2,578	3.8%
Other (NIBRS - Group B)	90B	Curfew / Loitering / Vagrancy Violations	13	64	20.3%	10	43	-76.7%
	90D	Driving Under the Influence	79	359	22.0%	53	81	-34.6%
	90E	Drunkennes	148	799	18.5%	143	206	-30.6%

View a [Council District Map](#). For NIBRS offense definitions, go to www.fortworthpd.com/crime-information/

Figure 15—Offenses Reported in Council District 3

	NIBRS Code	Types of Offenses	Number of Offenses 2nd Quarter 2011			Number of Offenses Quarterly Comparison		
			Council District 3 Zimmerman	Citywide	% Total	2nd Quarter 2011	2nd Quarter 2010	% Change
Crimes A gainst Persons (NIBRS - Group A)	13A - C	Assault Offenses	322	3,335	9.7%	322	296	8.8%
	13A	Aggravated Assault	70	837	8.4%	70	46	52.2%
	13B	Simple Assault	229	2,230	10.3%	229	217	5.5%
	13C	Intimidation	23	268	8.6%	23	33	-30.3%
	100	Kidnapping/Abduction	4	30	13.3%	4	2	100.0%
	09A-B	Murder & Nonnegligent Manslaughter	1	12	8.3%	1	2	-50.0%
	11A - D	Sex Offenses, Forcible	21	224	9.4%	21	31	-32.3%
	11A	Forcible Rape	11	94	11.7%	11	18	-38.9%
	11B-D	Other	10	130	7.7%	10	13	-23.1%
	36A - B	Sex Offenses, Nonforcible	0	0	---	0	0	---
Crimes Against Persons Subtotal			348	3,601	9.7%	348	331	5.1%
Crimes A gainst Property (NIBRS - Group A)	200	Arson	3	26	11.5%	3	2	50.0%
	510	Bribery	0	2	0.0%	0	0	---
	220	Burglary/Breaking & Entering	279	2,786	10.0%	279	202	38.1%
		Residence	226	2,213	10.2%	226	167	35.3%
		Business	34	347	9.8%	34	26	30.8%
		Other	19	226	8.4%	19	9	111.1%
	250	Counterfeiting/Forgery	31	164	18.9%	31	15	106.7%
	290	Destruction/Damage/Vandalism of Property (excluding arson)	243	2,453	9.9%	243	247	-1.6%
	270	Embezzlement	9	40	22.5%	9	6	50.0%
	210	Extortion/Blackmail	0	0	---	0	0	---
	26A - E	Fraud Offenses	150	1,131	13.3%	150	162	-7.4%
	23A-H	Larceny/Theft Offenses - Total	790	6,224	12.7%	790	782	1.0%
	23A & B	Pocket-picking & Purse-snatching	24	113	21.2%	24	19	26.3%
	23C	Shoplifting	216	1,182	18.3%	216	189	14.3%
	23D	Theft from Building	2	69	2.9%	2	2	0.0%
	23E	Theft from Coin-Operated Machine or Device	7	30	23.3%	7	5	40.0%
	23F	Theft from Motor Vehicle	198	1,535	12.9%	198	254	-22.0%
	23G	Theft of Motor Vehicle Parts or Accessories	116	1,060	10.9%	116	135	-14.1%
	23H	All Other Larceny	227	2,235	10.2%	227	178	27.5%
240	Motor Vehicle Theft	72	579	12.4%	72	41	75.6%	
120	Robbery	32	312	10.3%	32	35	-8.6%	
280	Stolen Property Offenses	0	1	0.0%	0	0	---	
Crimes Against Property Subtotal			1,609	13,718	11.7%	1,609	1,492	7.8%
Crimes A gainst Society (NIBRS - Grp A)	35A	Drug/Narcotic Violations (excluding DUI)	93	964	9.6%	93	69	34.8%
	39A - D	Gambling Offenses	0	0	---	0	0	---
	370	Pornography/Obscene Material	0	0	---	0	0	---
	40A	Prostitution	4	171	2.3%	4	4	0.0%
	520	Weapon Law Violations	12	129	9.3%	12	12	0.0%
Crimes Against Society Subtotal			109	1,264	8.6%	109	85	28.2%
Total Group A			2,066	18,583	11.1%	2,066	1,908	8.3%
Other (NIBRS - Grp B)	90B	Curfew / Loitering / Vagrancy Violations	8	64	12.5%	8	8	0.0%
	90D	Driving Under the Influence	40	359	11.1%	40	35	14.3%
	90E	Drunkenness	57	799	7.1%	57	63	-9.5%

View a [Council District Map](#). For NIBRS offense definitions, go to www.fortworthpd.com/crime-information/

Figure 16—Offenses Reported in Council District 4

	NIBRS Code	Types of Offenses	Number of Offenses 2nd Quarter 2011			Number of Offenses Quarterly Comparison		
			Council District 4 Scarth	Citywide	% Total	2nd Quarter 2011	2nd Quarter 2010	% Change
Crimes Against Persons (NIBRS - Group A)	13A - C	Assault Offenses	329	3,335	9.9%	329	383	-14.1%
	13A	Aggravated Assault	74	837	8.8%	74	84	-11.9%
	13B	Simple Assault	231	2,230	10.4%	231	270	-14.4%
	13C	Intimidation	24	268	9.0%	24	29	-17.2%
	100	Kidnapping/Abduction	3	30	10.0%	3	6	-50.0%
	09A-B	Murder & Nonnegligent Manslaughter	1	12	8.3%	1	3	-66.7%
	11A - D	Sex Offenses, Forcible	21	224	9.4%	21	28	-25.0%
	11A	Forcible Rape	9	94	9.6%	9	11	-18.2%
	11B-D	Other	12	130	9.2%	12	17	-29.4%
	36A - B	Sex Offenses, Nonforcible	0	0	---	0	0	---
Crimes Against Persons Subtotal			354	3,601	9.8%	354	420	-15.7%
Crimes Against Property (NIBRS - Group A)	200	Arson	0	26	0.0%	0	7	-100.0%
	510	Bribery	0	2	0.0%	0	1	-100.0%
	220	Burglary/Breaking & Entering	356	2,786	12.8%	356	305	16.7%
		Residence	279	2,213	12.6%	279	231	20.8%
		Business	54	347	15.6%	54	37	45.9%
		Other	23	226	10.2%	23	37	-37.8%
	250	Counterfeiting/Forgery	29	164	17.7%	29	17	70.6%
	290	Destruction/Damage/Vandalism of Property (excluding arson)	291	2,453	11.9%	291	299	-2.7%
	270	Embezzlement	4	40	10.0%	4	5	-20.0%
	210	Extortion/Blackmail	0	0	---	0	0	---
	26A - E	Fraud Offenses	148	1,131	13.1%	148	144	2.8%
	23A-H	Larceny/Theft Offenses - Total	710	6,224	11.4%	710	815	-12.9%
	23A & B	Pocket-picking & Purse-snatching	10	113	8.8%	10	15	-33.3%
	23C	Shoplifting	156	1,182	13.2%	156	237	-34.2%
	23D	Theft from Building	14	69	20.3%	14	4	250.0%
	23E	Theft from Coin-Operated Machine or Device	2	30	6.7%	2	4	-50.0%
	23F	Theft from Motor Vehicle	178	1,535	11.6%	178	199	-10.6%
	23G	Theft of Motor Vehicle Parts or Accessories	120	1,060	11.3%	120	142	-15.5%
	23H	All Other Larceny	230	2,235	10.3%	230	214	7.5%
	240	Motor Vehicle Theft	63	579	10.9%	63	51	23.5%
120	Robbery	16	312	5.1%	16	39	-59.0%	
280	Stolen Property Offenses	0	1	0.0%	0	1	-100.0%	
Crimes Against Property Subtotal			1,617	13,718	11.8%	1,617	1,684	-4.0%
Crimes Against Society (NIBRS - Grp A)	35A	Drug/Narcotic Violations (excluding DUI)	77	964	8.0%	77	96	-19.8%
	39A - D	Gambling Offenses	0	0	---	0	0	---
	370	Pornography/Obscene Material	0	0	---	0	0	---
	40A	Prostitution	1	171	0.6%	1	3	-66.7%
	520	Weapon Law Violations	10	129	7.8%	10	18	-44.4%
Crimes Against Society Subtotal			88	1,264	7.0%	88	117	-24.8%
Total Group A			2,059	18,583	11.1%	2,059	2,221	-7.3%
Other (NIBRS - Grp B)	90B	Curfew / Loitering / Vagrancy Violations	4	64	6.3%	4	10	-60.0%
	90D	Driving Under the Influence	16	359	4.5%	16	33	-51.5%
	90E	Drunkenness	43	799	5.4%	43	79	-45.6%

View a [Council District Map](#). For NIBRS offense definitions, go to www.fortworthpd.com/crime-information/

Figure 17—Offenses Reported in Council District 5

	NIBRS Code	Types of Offenses	Number of Offenses 2nd Quarter 2011			Number of Offenses Quarterly Comparison		
			Council District 5 Moss	Citywide	% Total	2nd Quarter 2011	2nd Quarter 2010	% Change
Crimes Against Persons (NIBRS - Group A)	13A - C	Assault Offenses	465	3,335	13.9%	465	440	5.7%
	13A	Aggravated Assault	123	837	14.7%	123	105	17.1%
	13B	Simple Assault	306	2,230	13.7%	306	281	8.9%
	13C	Intimidation	36	268	13.4%	36	54	-33.3%
	100	Kidnapping/Abduction	4	30	13.3%	4	4	0.0%
	09A-B	Murder & Nonnegligent Manslaughter	4	12	33.3%	4	9	-55.6%
	11A - D	Sex Offenses, Forcible	34	224	15.2%	34	26	30.8%
	11A	Forcible Rape	12	94	12.8%	12	14	-14.3%
	11B-D	Other	22	130	16.9%	22	12	83.3%
	36A - B	Sex Offenses, Nonforcible	0	0	---	0	0	---
Crimes Against Persons Subtotal			507	3,601	14.1%	507	479	5.8%
Crimes Against Property (NIBRS - Group A)	200	Arson	6	26	23.1%	6	6	0.0%
	510	Bribery	0	2	0.0%	0	1	-100.0%
	220	Burglary/Breaking & Entering	523	2,786	18.8%	523	428	22.2%
		Residence	446	2,213	20.2%	446	346	28.9%
		Business	38	347	11.0%	38	46	-17.4%
		Other	39	226	17.3%	39	36	8.3%
	250	Counterfeiting/Forgery	11	164	6.7%	11	17	-35.3%
	290	Destruction/Damage/Vandalism of Property (excluding arson)	314	2,453	12.8%	314	352	-10.8%
	270	Embezzlement	6	40	15.0%	6	2	200.0%
	210	Extortion/Blackmail	0	0	---	0	0	---
	26A - E	Fraud Offenses	122	1,131	10.8%	122	141	-13.5%
	23A-H	Larceny/Theft Offenses - Total	606	6,224	9.7%	606	605	0.2%
	23A & B	Pocket-picking & Purse-snatching	15	113	13.3%	15	23	-34.8%
	23C	Shoplifting	55	1,182	4.7%	55	76	-27.6%
	23D	Theft from Building	5	69	7.2%	5	4	25.0%
	23E	Theft from Coin-Operated Machine or Device	2	30	6.7%	2	1	100.0%
	23F	Theft from Motor Vehicle	143	1,535	9.3%	143	129	10.9%
	23G	Theft of Motor Vehicle Parts or Accessories	109	1,060	10.3%	109	125	-12.8%
	23H	All Other Larceny	277	2,235	12.4%	277	247	12.1%
	240	Motor Vehicle Theft	88	579	15.2%	88	78	12.8%
120	Robbery	55	312	17.6%	55	65	-15.4%	
280	Stolen Property Offenses	0	1	0.0%	0	0	---	
Crimes Against Property Subtotal			1,731	13,718	12.6%	1,731	1,695	2.1%
Crimes Against Society (NIBRS - Grp A)	35A	Drug/Narcotic Violations (excluding DUI)	117	964	12.1%	117	124	-5.6%
	39A - D	Gambling Offenses	0	0	---	0	0	---
	370	Pornography/Obscene Material	0	0	---	0	0	---
	40A	Prostitution	22	171	12.9%	22	24	-8.3%
	520	Weapon Law Violations	18	129	14.0%	18	24	-25.0%
Crimes Against Society Subtotal			157	1,264	12.4%	157	172	-8.7%
Total Group A			2,395	18,583	12.9%	2,395	2,346	2.1%
Other (NIBRS - Grp B)	90B	Curfew / Loitering / Vagrancy Violations	8	64	12.5%	8	19	-57.9%
	90D	Driving Under the Influence	29	359	8.1%	29	33	-12.1%
	90E	Drunkenness	68	799	8.5%	68	71	-4.2%

View a [Council District Map](#). For NIBRS offense definitions, go to www.fortworthpd.com/crime-information/

Figure 18—Offenses Reported in Council District 6

	NIBRS Code	Types of Offenses	Number of Offenses 2nd Quarter 2011			Number of Offenses Quarterly Comparison		
			Council District 6 Jordan	Citywide	% Total	2nd Quarter 2011	2nd Quarter 2010	% Change
Crimes A against Persons (NIBRS - Group A)	13A - C	Assault Offenses	358	3,335	10.7%	358	388	-7.7%
	13A	Aggravated Assault	67	837	8.0%	67	81	-17.3%
	13B	Simple Assault	260	2,230	11.7%	260	279	-6.8%
	13C	Intimidation	31	268	11.6%	31	28	10.7%
	100	Kidnaping/Abduction	2	30	6.7%	2	3	-33.3%
	09A-B	Murder & Nonnegligent Manslaughter	3	12	25.0%	3	1	200.0%
	11A - D	Sex Offenses, Forcible	22	224	9.8%	22	28	-21.4%
	11A	Forcible Rape	4	94	4.3%	4	5	-20.0%
	11B-D	Other	18	130	13.8%	18	23	-21.7%
	36A - B	Sex Offenses, Nonforcible	0	0	---	0	0	---
Crimes Against Persons Subtotal			385	3,601	10.7%	385	420	-8.3%
Crimes A against Property (NIBRS - Group A)	200	Arson	5	26	19.2%	5	3	66.7%
	510	Bribery	1	2	50.0%	1	0	---
	220	Burglary/Breaking & Entering	277	2,786	9.9%	277	306	-9.5%
		Residence	242	2,213	10.9%	242	269	-10.0%
		Business	23	347	6.6%	23	19	21.1%
		Other	12	226	5.3%	12	18	-33.3%
	250	Counterfeiting/Forgery	17	164	10.4%	17	23	-26.1%
	290	Destruction/Damage/Vandalism of Property (excluding arson)	286	2,453	11.7%	286	311	-8.0%
	270	Embezzlement	3	40	7.5%	3	4	-25.0%
	210	Extortion/Blackmail	0	0	---	0	0	---
	26A - E	Fraud Offenses	154	1,131	13.6%	154	172	-10.5%
	23A-H	Larceny/Theft Offenses - Total	702	6,224	11.3%	702	622	12.9%
	23A & B	Pocket-picking & Purse-snatching	8	113	7.1%	8	7	14.3%
	23C	Shoplifting	237	1,182	20.1%	237	159	49.1%
	23D	Theft from Building	5	69	7.2%	5	8	-37.5%
	23E	Theft from Coin-Operated Machine or Device	2	30	6.7%	2	3	-33.3%
	23F	Theft from Motor Vehicle	164	1,535	10.7%	164	137	19.7%
	23G	Theft of Motor Vehicle Parts or Accessories	106	1,060	10.0%	106	113	-6.2%
	23H	All Other Larceny	180	2,235	8.1%	180	195	-7.7%
	240	Motor Vehicle Theft	44	579	7.6%	44	41	7.3%
120	Robbery	36	312	11.5%	36	25	44.0%	
280	Stolen Property Offenses	1	1	100.0%	1	0	---	
Crimes Against Property Subtotal			1,526	13,718	11.1%	1,526	1,507	1.3%
Crimes A against Society (NIBRS - Grp A)	35A	Drug/Narcotic Violations (excluding DUI)	88	964	9.1%	88	52	69.2%
	39A - D	Gambling Offenses	0	0	---	0	0	---
	370	Pornography/Obscene Material	0	0	---	0	0	---
	40A	Prostitution	0	171	0.0%	0	0	---
	520	Weapon Law Violations	9	129	7.0%	9	7	28.6%
Crimes Against Society Subtotal			97	1,264	7.7%	97	59	64.4%
Total Group A			2,008	18,583	10.8%	2,008	1,986	1.1%
Other (NIBRS - Grp B)	90B	Curfew / Loitering / Vagrancy Violations	2	64	3.1%	2	18	-88.9%
	90D	Driving Under the Influence	19	359	5.3%	19	31	-38.7%
	90E	Drunkness	35	799	4.4%	35	29	20.7%

View a [Council District Map](#). For NIBRS offense definitions, go to www.fortworthpd.com/crime-information/

Figure 19—Offenses Reported in Council District 7

	NIBRS Code	Types of Offenses	Number of Offenses 2nd Quarter 2011			Number of Offenses Quarterly Comparison		
			Council District 7 Shingleton	Citywide	% Total	2nd Quarter 2011	2nd Quarter 2010	% Change
Crimes A against Persons (NIBRS - Group A)	13A - C	Assault Offenses	458	3,335	13.7%	458	410	11.7%
	13A	Aggravated Assault	86	837	10.3%	86	97	-11.3%
	13B	Simple Assault	331	2,230	14.8%	331	273	21.2%
	13C	Intimidation	41	268	15.3%	41	40	2.5%
	100	Kidnapping/Abduction	4	30	13.3%	4	2	100.0%
	09A-B	Murder & Nonnegligent Manslaughter	0	12	0.0%	0	0	---
	11A - D	Sex Offenses, Forcible	27	224	12.1%	27	27	0.0%
	11A	Forcible Rape	11	94	11.7%	11	8	37.5%
	11B-D	Other	16	130	12.3%	16	19	-15.8%
36A - B	Sex Offenses, Nonforcible	0	0	---	0	0	---	
Crimes Against Persons Subtotal			489	3,601	13.6%	489	439	11.4%
Crimes A against Property (NIBRS - Group A)	200	Arson	2	26	7.7%	2	3	-33.3%
	510	Bribery	0	2	0.0%	0	0	---
	220	Burglary/Breaking & Entering	271	2,786	9.7%	271	292	-7.2%
		Residence	226	2,213	10.2%	226	222	1.8%
		Business	26	347	7.5%	26	41	-36.6%
		Other	19	226	8.4%	19	29	-34.5%
	250	Counterfeiting/Forgery	13	164	7.9%	13	8	62.5%
	290	Destruction/Damage/Vandalism of Property (excluding arson)	319	2,453	13.0%	319	337	-5.3%
	270	Embezzlement	6	40	15.0%	6	8	-25.0%
	210	Extortion/Blackmail	0	0	---	0	0	---
	26A - E	Fraud Offenses	165	1,131	14.6%	165	157	5.1%
	23A-H	Larceny/Theft Offenses - Total	905	6,224	14.5%	905	815	11.0%
	23A & B	Pocket-picking & Purse-snatching	10	113	8.8%	10	15	-33.3%
	23C	Shoplifting	188	1,182	15.9%	188	169	11.2%
	23D	Theft from Building	11	69	15.9%	11	3	266.7%
	23E	Theft from Coin-Operated Machine or Device	6	30	20.0%	6	2	200.0%
	23F	Theft from Motor Vehicle	251	1,535	16.4%	251	251	0.0%
	23G	Theft of Motor Vehicle Parts or Accessories	156	1,060	14.7%	156	138	13.0%
	23H	All Other Larceny	283	2,235	12.7%	283	237	19.4%
	240	Motor Vehicle Theft	54	579	9.3%	54	64	-15.6%
120	Robbery	25	312	8.0%	25	52	-51.9%	
280	Stolen Property Offenses	0	1	0.0%	0	0	---	
Crimes Against Property Subtotal			1,760	13,718	12.8%	1,760	1,736	1.4%
Crimes A against Society (NIBRS - Grp A)	35A	Drug/Narcotic Violations (excluding DUI)	80	964	8.3%	80	84	-4.8%
	39A - D	Gambling Offenses	0	0	---	0	0	---
	370	Pornography/Obscene Material	0	0	---	0	0	---
	40A	Prostitution	5	171	2.9%	5	1	400.0%
	520	Weapon Law Violations	11	129	8.5%	11	11	0.0%
Crimes Against Society Subtotal			96	1,264	7.6%	96	96	0.0%
Total Group A			2,345	18,583	12.6%	2,345	2,271	3.3%
Other (NIBRS - Grp B)	90B	Curfew / Loitering / Vagrancy Violations	15	64	23.4%	15	9	66.7%
	90D	Driving Under the Influence	36	359	10.0%	36	36	0.0%
	90E	Drunkenness	68	799	8.5%	68	71	-4.2%

View a [Council District Map](#). For NIBRS offense definitions, go to www.fortworthpd.com/crime-information/

Figure 20—Offenses Reported in Council District 8

	NIBRS Code	Types of Offenses	Number of Offenses 2nd Quarter 2011			Number of Offenses Quarterly Comparison		
			Council District 8 Hicks	Citywide	% Total	2nd Quarter 2011	2nd Quarter 2010	% Change
Crimes A against Persons (NIBRS - Group A)	13A - C	Assault Offenses	595	3,335	17.8%	595	614	-3.1%
	13A	Aggravated Assault	184	837	22.0%	184	142	29.6%
	13B	Simple Assault	351	2,230	15.7%	351	421	-16.6%
	13C	Intimidation	60	268	22.4%	60	51	17.6%
	100	Kidnapping/Abduction	6	30	20.0%	6	0	---
	09A-B	Murder & Nonnegligent Manslaughter	1	12	8.3%	1	3	-66.7%
	11A - D	Sex Offenses, Forcible	40	224	17.9%	40	34	17.6%
	11A	Forcible Rape	24	94	25.5%	24	13	84.6%
	11B-D	Other	16	130	12.3%	16	21	-23.8%
	36A - B	Sex Offenses, Nonforcible	0	0	---	0	0	---
Crimes Against Persons Subtotal			642	3,601	17.8%	642	651	-1.4%
Crimes A against Property (NIBRS - Group A)	200	Arson	6	26	23.1%	6	9	-33.3%
	510	Bribery	0	2	0.0%	0	0	---
	220	Burglary/Breaking & Entering	446	2,786	16.0%	446	434	2.8%
		Residence	342	2,213	15.5%	342	304	12.5%
		Business	61	347	17.6%	61	64	-4.7%
		Other	43	226	19.0%	43	66	-34.8%
	250	Counterfeiting/Forgery	17	164	10.4%	17	32	-46.9%
	290	Destruction/Damage/Vandalism of Property (excluding arson)	369	2,453	15.0%	369	373	-1.1%
	270	Embezzlement	6	40	15.0%	6	3	100.0%
	210	Extortion/Blackmail	0	0	---	0	0	---
	26A - E	Fraud Offenses	92	1,131	8.1%	92	114	-19.3%
	23A-H	Larceny/Theft Offenses - Total	733	6,224	11.8%	733	632	16.0%
	23A & B	Pocket-picking & Purse-snatching	25	113	22.1%	25	20	25.0%
	23C	Shoplifting	71	1,182	6.0%	71	63	12.7%
	23D	Theft from Building	4	69	5.8%	4	8	-50.0%
	23E	Theft from Coin-Operated Machine or Device	1	30	3.3%	1	4	-75.0%
	23F	Theft from Motor Vehicle	144	1,535	9.4%	144	146	-1.4%
	23G	Theft of Motor Vehicle Parts or Accessories	101	1,060	9.5%	101	108	-6.5%
	23H	All Other Larceny	387	2,235	17.3%	387	283	36.7%
	240	Motor Vehicle Theft	93	579	16.1%	93	113	-17.7%
120	Robbery	79	312	25.3%	79	82	-3.7%	
280	Stolen Property Offenses	0	1	0.0%	0	0	---	
Crimes Against Property Subtotal			1,841	13,718	13.4%	1,841	1,792	2.7%
Crimes A against Society (NIBRS - Grp A)	35A	Drug/Narcotic Violations (excluding DUI)	214	964	22.2%	214	172	24.4%
	39A - D	Gambling Offenses	0	0	---	0	0	---
	370	Pornography/Obscene Material	0	0	---	0	0	---
	40A	Prostitution	122	171	71.3%	122	94	29.8%
	520	Weapon Law Violations	24	129	18.6%	24	22	9.1%
Crimes Against Society Subtotal			360	1,264	28.5%	360	288	25.0%
Total Group A			2,843	18,583	15.3%	2,843	2,731	4.1%
Other (NIBRS - Grp B)	90B	Curfew / Loitering / Vagrancy Violations	9	64	14.1%	9	23	-60.9%
	90D	Driving Under the Influence	47	359	13.1%	47	62	-24.2%
	90E	Drunkenness	152	799	19.0%	152	157	-3.2%

View a [Council District Map](#). For NIBRS offense definitions, go to www.fortworthpd.com/crime-information/

Figure 21—Offenses Reported in Council District 9

	NIBRS Code	Types of Offenses	Number of Offenses 2nd Quarter 2011			Number of Offenses Quarterly Comparison		
			Council District 9 Burns	Citywide	% Total	2nd Quarter 2011	2nd Quarter 2010	% Change
Crimes Against Persons (NIBRS - Group A)	13A - C	Assault Offenses	377	3,335	11.3%	377	378	-0.3%
	13A	Aggravated Assault	106	837	12.7%	106	72	47.2%
	13B	Simple Assault	242	2,230	10.9%	242	275	-12.0%
	13C	Intimidation	29	268	10.8%	29	31	-6.5%
	100	Kidnapping/Abduction	2	30	6.7%	2	2	0.0%
	09A-B	Murder & Nonnegligent Manslaughter	0	12	0.0%	0	0	---
	11A - D	Sex Offenses, Forcible	19	224	8.5%	19	20	-5.0%
	11A	Forcible Rape	10	94	10.6%	10	8	25.0%
	11B-D	Other	9	130	6.9%	9	12	-25.0%
	36A - B	Sex Offenses, Nonforcible	0	0	---	0	0	---
Crimes Against Persons Subtotal			398	3,601	11.1%	398	400	-0.5%
Crimes Against Property (NIBRS - Group A)	200	Arson	3	26	11.5%	3	1	200.0%
	510	Bribery	0	2	0.0%	0	0	---
	220	Burglary/Breaking & Entering	265	2,786	9.5%	265	199	33.2%
		Residence	190	2,213	8.6%	190	130	46.2%
		Business	53	347	15.3%	53	41	29.3%
		Other	22	226	9.7%	22	28	-21.4%
	250	Counterfeiting/Forgery	25	164	15.2%	25	20	25.0%
	290	Destruction/Damage/Vandalism of Property (excluding arson)	276	2,453	11.3%	276	308	-10.4%
	270	Embezzlement	3	40	7.5%	3	4	-25.0%
	210	Extortion/Blackmail	0	0	---	0	0	---
	26A - E	Fraud Offenses	134	1,131	11.8%	134	129	3.9%
	23A-H	Larceny/Theft Offenses - Total	770	6,224	12.4%	770	759	1.4%
	23A & B	Pocket-picking & Purse-snatching	12	113	10.6%	12	11	9.1%
	23C	Shoplifting	149	1,182	12.6%	149	132	12.9%
	23D	Theft from Building	16	69	23.2%	16	11	45.5%
	23E	Theft from Coin-Operated Machine or Device	5	30	16.7%	5	7	-28.6%
	23F	Theft from Motor Vehicle	163	1,535	10.6%	163	224	-27.2%
	23G	Theft of Motor Vehicle Parts or Accessories	149	1,060	14.1%	149	137	8.8%
	23H	All Other Larceny	276	2,235	12.3%	276	237	16.5%
240	Motor Vehicle Theft	81	579	14.0%	81	85	-4.7%	
120	Robbery	43	312	13.8%	43	31	38.7%	
280	Stolen Property Offenses	0	1	0.0%	0	0	---	
Crimes Against Property Subtotal			1,600	13,718	11.7%	1,600	1,536	4.2%
Crimes Against Society (NIBRS - Grp A)	35A	Drug/Narcotic Violations (excluding DUI)	124	964	12.9%	124	129	-3.9%
	39A - D	Gambling Offenses	0	0	---	0	0	---
	370	Pornography/Obscene Material	0	0	---	0	0	---
	40A	Prostitution	12	171	7.0%	12	1	1100.0%
	520	Weapon Law Violations	19	129	14.7%	19	13	46.2%
Crimes Against Society Subtotal			155	1,264	12.3%	155	143	8.4%
Total Group A			2,153	18,583	11.6%	2,153	2,079	3.6%
Other (NIBRS - Grp B)	90B	Curfew / Loitering / Vagrancy Violations	5	64	7.8%	5	12	-58.3%
	90D	Driving Under the Influence	91	359	25.3%	91	118	-22.9%
	90E	Drunkenness	227	799	28.4%	227	284	-20.1%

View a [Council District Map](#). For NIBRS offense definitions, go to www.fortworthpd.com/crime-information/

Section III.

Directions Home High Impact Zone Report

Figure 23—Offenses Reported within Directions Home Primary High Impact Zone

	NIBRS Code	Primary - Directions Home HIZ Types of Offenses	Number of Offenses Quarterly Comparison			Year-to-Date (January- June)		
			2nd Quarter 2011	2nd Quarter 2010	% Change	2011	2010	% Change
Crimes Against Persons (NIBRS - Group A)	13A - C	Assault Offenses	40	55	-27.3%	79	90	-12.2%
	13A	Aggravated Assault	8	8	0.0%	16	18	-11.1%
	13B	Simple Assault	26	41	-36.6%	56	63	-11.1%
	13C	Intimidation	6	6	0.0%	7	9	-22.2%
	100	Kidnapping/Abduction	0	0	---	0	0	---
	09A-B	Murder & Nonnegligent Manslaughter	0	0	---	0	0	---
	11A - D	Sex Offenses, Forcible	2	3	-33.3%	2	4	-50.0%
	11A	Forcible Rape	2	2	0.0%	2	3	-33.3%
	11B-D	Other	0	1	-100.0%	0	1	-100.0%
	36A - B	Sex Offenses, Nonforcible	0	0	---	0	0	---
Crimes Against Persons Subtotal			42	58	-27.6%	81	94	-13.8%
Crimes Against Property (NIBRS - Group A)	200	Arson	0	0	---	0	0	---
	510	Bribery	0	0	---	0	0	---
	220	Burglary/Breaking & Entering	0	1	-100.0%	2	5	-60.0%
		Residence	0	0	---	1	0	---
		Business	0	1	-100.0%	1	4	-75.0%
		Other	0	0	---	0	1	-100.0%
	250	Counterfeiting/Forgery	2	0	---	2	1	100.0%
	290	Destruction/Damage/Vandalism of Property (excluding arson)	6	7	-14.3%	7	7	0.0%
	270	Embezzlement	0	0	---	0	0	---
	210	Extortion/Blackmail	0	0	---	0	0	---
	26A - E	Fraud Offenses	3	3	0.0%	5	7	-28.6%
	23A-H	Larceny/Theft Offenses - Total	22	36	-38.9%	54	68	-20.6%
	23A & B	Pocket-picking & Purse-snatching	5	4	25.0%	8	7	14.3%
	23C	Shoplifting	0	0	---	0	0	---
	23D	Theft from Building	0	0	---	1	1	0.0%
	23E	Theft from Coin-Operated Machine or Device	0	1	-100.0%	0	1	-100.0%
	23F	Theft from Motor Vehicle	3	3	0.0%	4	3	33.3%
	23G	Theft of Motor Vehicle Parts or Accessories	3	3	0.0%	12	4	200.0%
	23H	All Other Larceny	11	25	-56.0%	29	52	-44.2%
240	Motor Vehicle Theft	2	5	-60.0%	3	7	-57.1%	
120	Robbery	6	8	-25.0%	10	10	0.0%	
280	Stolen Property Offenses	0	0	---	0	0	---	
Crimes Against Property Subtotal			41	60	-31.7%	83	105	-21.0%
Crimes Against Society (NIBRS - Grp A)	35A	Drug/Narcotic Violations (excluding DUI)	12	21	-42.9%	28	34	-17.6%
	39A - D	Gambling Offenses	0	0	---	0	0	---
	370	Pornography/Obscene Material	0	0	---	0	0	---
	40A	Prostitution	3	12	-75.0%	11	25	-56.0%
	520	Weapon Law Violations	1	0	---	2	1	100.0%
Crimes Against Society Subtotal			16	33	-51.5%	41	60	-31.7%
Total Group A			99	151	-34.4%	205	259	-20.8%
Other (NIBRS - Grp B)	90B	Curfew / Loitering / Vagrancy Violations	0	0	---	0	0	---
	90D	Driving Under the Influence	3	4	-25.0%	4	10	-60.0%
	90E	Drunkenness	13	34	-61.8%	39	64	-39.1%

View a [Directions Home High Impact Zone Map](#). For NIBRS offense definitions, go to www.fortworthpd.com/crime-information/

Figure 24—Offenses Reported within Directions Home Secondary High Impact Zone

NIBRS Code	Secondary - Directions Home HIZ Types of Offenses	Number of Offenses Quarterly Comparison			Year-to-Date (January- June)			
		2nd Quarter 2011	2nd Quarter 2010	% Total	2011	2010	% Change	
Crimes Against Persons (NIBRS - Group A)	13A - C	Assault Offenses	44	43	2.3%	86	70	22.9%
	13A	Aggravated Assault	19	10	90.0%	31	12	158.3%
	13B	Simple Assault	22	30	-26.7%	45	54	-16.7%
	13C	Intimidation	3	3	0.0%	10	4	150.0%
	100	Kidnapping/Abduction	0	0	---	1	0	---
	09A-B	Murder & Nonnegligent Manslaughter	0	0	---	0	0	---
	11A - D	Sex Offenses, Forcible	0	2	-100.0%	1	4	-75.0%
	11A	Forcible Rape	0	1	-100.0%	0	2	-100.0%
	11B-D	Other	0	1	-100.0%	1	2	-50.0%
	36A - B	Sex Offenses, Nonforcible	0	0	---	0	0	---
Crimes Against Persons Subtotal			44	45	-2.2%	88	74	18.9%
Crimes Against Property (NIBRS - Group A)	200	Arson	0	0	---	0	1	-100.0%
	510	Bribery	0	0	---	0	0	---
	220	Burglary/Breaking & Entering	25	20	25.0%	42	42	0.0%
		Residence	19	11	72.7%	31	25	24.0%
		Business	4	6	-33.3%	7	13	-46.2%
		Other	2	3	-33.3%	4	4	0.0%
	250	Counterfeiting/Forgery	0	1	-100.0%	2	1	100.0%
	290	Destruction/Damage/Vandalism of Property (excluding arson)	21	11	90.9%	40	35	14.3%
	270	Embezzlement	0	0	---	1	0	---
	210	Extortion/Blackmail	0	0	---	0	0	---
	26A - E	Fraud Offenses	3	6	-50.0%	11	10	10.0%
	23A-H	Larceny/Theft Offenses - Total	42	34	23.5%	66	65	1.5%
	23A & B	Pocket-picking & Purse-snatching	1	1	0.0%	1	3	-66.7%
	23C	Shoplifting	1	1	0.0%	1	2	-50.0%
	23D	Theft from Building	1	0	---	1	0	---
	23E	Theft from Coin-Operated Machine or Device	0	0	---	0	0	---
	23F	Theft from Motor Vehicle	7	9	-22.2%	13	15	-13.3%
	23G	Theft of Motor Vehicle Parts or Accessories	3	5	-40.0%	5	12	-58.3%
	23H	All Other Larceny	29	18	61.1%	45	33	36.4%
	240	Motor Vehicle Theft	7	11	-36.4%	20	18	11.1%
120	Robbery	8	4	100.0%	10	7	42.9%	
280	Stolen Property Offenses	0	0	---	0	0	---	
Crimes Against Property Subtotal			106	87	21.8%	192	179	7.3%
Crimes Against Society (NIBRS - Grp A)	35A	Drug/Narcotic Violations (excluding DUI)	14	10	40.0%	30	34	-11.8%
	39A - D	Gambling Offenses	0	0	---	0	0	---
	370	Pornography/Obscene Material	0	0	---	0	0	---
	40A	Prostitution	13	14	-7.1%	30	28	7.1%
	520	Weapon Law Violations	2	0	---	4	0	---
Crimes Against Society Subtotal			29	24	20.8%	64	62	3.2%
Total Group A			179	156	14.7%	344	315	9.2%
Other (NIBRS - Grp B)	90B	Curfew / Loitering / Vagrancy Violations	1	0	---	1	0	---
	90D	Driving Under the Influence	1	8	-87.5%	6	17	-64.7%
	90E	Drunkenness	10	9	11.1%	23	18	27.8%

View a [Directions Home High Impact Zone Map](#). For NIBRS offense definitions, go to www.fortworthpd.com/crime-information/

Section IV.

Uniform Crime Reporting (UCR) Traditional Summary Report

4.1 2nd Quarter 2011 Uniform Crime Reporting (UCR) Traditional Summary Report

Uniform Crime Report (UCR) Traditional Summary Reporting is a collective effort on the part of jurisdictions throughout the United States to present a nationwide view of crime using eight of the most serious and most commonly reported crimes including Criminal Homicide, Forcible Rape, Robbery, Aggravated Assault, Burglary, Larceny-Theft, Motor Vehicle Theft and Arson, also known as Part 1 crimes. In the Summary Reporting System, simply the number of criminal incidents are counted, as opposed to the more detailed data collected (using a different methodology) through the National Incident Based Reporting System (NIBRS).

Below represents the number of criminal incidents for each Part 1 crime:

Figure 25 - 2nd Quarter 2011 UCR Traditional Summary Report

UCR Traditional Summary Report						
Part I Offenses	Number of Criminal Incidents			Year-to-Date (January - June)		
	2nd Quarter 2011	2nd Quarter 2010	% Change	2011	2010	% Change
Murder & Nonnegligent Manslaughter	12	21	-42.9%	20	33	-39.4%
Forcible Rape	94	83	13.3%	172	151	13.9%
Robbery	312	363	-14.0%	556	682	-18.5%
Aggravated Assault	672	601	11.8%	1,138	1,042	9.2%
Burglary	2,718	2,442	11.3%	4,684	4,451	5.2%
Larceny-Theft	6,224	5,922	5.1%	11,204	11,272	-0.6%
Motor Vehicle Theft	574	546	5.1%	1,061	1,041	1.9%
Arson	26	37	-29.7%	61	64	-4.7%
Total Part I Crime	10,632	10,015	6.2%	18,896	18,736	0.9%

The UCR data shows a total of eight offense types, which in the 2nd Quarter 2011 increased by 6.2% compared to the 2nd Quarter 2010. For comparison purposes, if you were to use the same eight Part 1 offense types, but use NIBRS methodology, the 2nd Quarter 2011 increased 7.03%. Of all twenty-two NIBRS Group A offenses, 2nd Quarter crime decreased 1.6% overall.

Quick Note About Reporting Differences

A significant difference between NIBRS and UCR Traditional Summary Reporting is the number of crimes being reported and the methodology used. For example, for Crimes Against Persons, NIBRS counts the number of victims, while UCR counts the number of incidents, which can result in NIBRS figures being higher than UCR figures depending on the number of victims involved in the incidents. In addition, the definitions for Part 1 offenses used in Summary Reporting are different than the offense definitions used by the National Incident Based Reporting System (NIBRS). Visit <http://www.fortworthpd.com/crime-information/> for details about the differences between NIBRS and UCR Traditional Summary Reporting.

The Fort Worth Police Department submits NIBRS data to the Texas Department of Public Safety (TXDPS), which is then submitted to the Federal Bureau of Investigation (FBI). The FBI then converts the NIBRS data into the UCR Traditional Summary Reporting for publication in the annual *Crime in the United States*. Since the data presented in this report is snapshot data queried on July 19, 2011, data queried before or after this date is apt to change and may vary from other reports.

Section V.

Department Initiatives Update

Department Re-organization



On Saturday, June 25, 2011, the Fort Worth Police Department implemented a reorganization to put the Department in position for both current and future operations.

The new organizational structure will increase operational oversight, which provides better service for residents, neighborhoods, and businesses. It will provide more avenues to ensure complaints are resolved, and it will streamline police services to provide for a more efficient use of government resources.

The new structure will provide a stable foundation for meeting current and future growth demands, align patrol services under one command to create consistent and uniformed service application, and assist in the implementation of strategic plan initiatives.

To view the new organizational chart visit: www.fortworthpd.com/docmgmt/FWPD/OrgChart.pdf

New Directions Home Liaison

The Police Department has been working with Otis Thornton, the Homelessness Program Director, and members of the Mayor's Advisory Commission on Homelessness to discuss a variety of strategies that the Police Department could implement to better serve and protect the homeless. As a result from some initial discussions, Officer Julie Cox was appointed as the Department's new Directions Home Liaison—serving as the Department's point of contact for issues as it relates to homelessness. Officer Cox will be able to provide information and training to officers so that officers are aware of and can assist in connecting the homeless to appropriate social services, understand how to work with homeless individuals, and assist with enforcement efforts. Officer Cox may be reached at 817-392-3965.



Chief Halstead Establishes New Community Advisory Board

The new Fort Worth Police Department Community Advisory Board met for the first time on May 9, 2011. Chief Halstead invited community leaders to serve on the board and provide insight and understanding of citizen concerns. Members represent various communities, including the deaf and hard of hearing, GLBT, and ethnic minority populations.



Success Through Respect

The Success Through Respect (STR) program is a pilot program that was implemented by East Division with the hopes of evolving into a city-wide program. Council Member Frank Moss and Major Gene Jones lead the Success Through Respect Program, which is a youth education program that was designed to build respect between young people and the police. Officer Cliff Miller served as the program facilitator.

The Police Department partnered with Fort Worth ISD and Umoja to assist with this program. Umoja assists young men in becoming better citizens by promoting education, respect, community involvement, responsibilities, etc. The Success Through Respect Program was conducted in five high schools: Dunbar, Eastern Hills, OD Wyatt, Polytechnic, and Metro. Program topics included the following:

- Why there is a need for police officers
- Proper ways to respond during an encounter with a police officer.
- Things to do and not to do while being stopped in a vehicle
- Group encounters; consensual encounters and stops based on legal suspicion
- Officer safety and use-of-force options
- Advise in handling complaints
- Scenarios to help reinforce recommendations on being safe, respectful, cooperative, smart, and courteous

Crime Suppression Update

The Information Management Division uses a comprehensive three-tier approach to crime suppression that involves 1) Targeting, 2) Enforcement, and 3) Environment utilizing participation of multiple divisions of the police department, other city departments and community stakeholders.

During the 2nd Quarter, the Information Management Division (IMD) analyzed five-year crime trend data and identified a crime suppression target area within West Division. The IMD gathered and analyzed intelligence and designed tactical operations plans that were carried out by West Division and specialized units—with the ultimate goal of reducing crime before the anticipated trend began.



analyzed intelligence and designed tactical operations plans that were carried out by West Division and specialized units—with the ultimate goal of reducing crime before the anticipated trend began.

In addition, the Neighborhood Police Officers conducted crime prevention through environmental design surveys to gather information about the physical environment and to identify issues that may be contributing to or encouraging criminal activity and to develop recommendations for improvements and begin revitalization efforts. The Police Department also worked with Code Compliance and with apartment property management to address code related problems. Below are the results from this initiative:

Face-to-Face Contacts/Knock-and-Talk

Dossiers by Offense Type—	376 Total
- Registered Sex Offenders—	22
- Parole Offenders—	114
- Probationary Offenders—	240

Safety Checkpoints

Checkpoint Blocks—	24
Persons Identified—	520
Total Cited Offenses—	650
Property Crime Suspects Identified	142



Narcotics

Narcotics arrests from Checkpoints-	14
SOD Narcotics Activity Arrest—	19
Guns Seized—	7
Confidential Informants—	4
Warrants—	5

Teen Curfew Detail (10 days)

Curfew Arrests-	50
Felony Arrests—	5
Misdemeanor Arrests—	11
Citations—	78

Crime Prevention Through Environmental Design (CPTED) Surveys

Apartment Complex Surveys—	20
Westland COP Group Patrol Area—	1

Community Policing Highlights

Central Division Burglary

On June, 15, 2011, a burglary was in progress at a single-family home in Central Division that involved three suspects with a red vehicle parked in front of the house. An officer, while conducting a traffic stop, was able to reach out to Citizens on Patrol volunteers to request assistance in observing the burglary location from a safe distance. A total of four COP volunteers were able to assist.

COP volunteers were able to take a vehicle and suspect description, assist in translating (Spanish/English) the damages and stolen property being reported by the victim to the responding officers, and verify the identification of the suspect vehicle that ultimately led Zero Tolerance to conduct a field interview of the occupants and tow the suspect vehicle.

Robberies

Citizens on Patrol volunteers also assisted with a few robbery cases during the 2nd Quarter, in which their prompt response, ability to take good descriptions, talk with neighborhood residents, and collaborate with detectives, neighborhood police officers and field units ultimately led to the arrest of two individuals, the identification of two additional suspects, and a wallet being returned to the owner.

Thank you Citizens on Patrol volunteers!

Increased Crime Watch Participation



The East Division Neighborhood Police Officer (NPO) Unit implemented a new initiative that was geared towards increasing crime watch membership. The initiative entailed, identifying a property crime location, following-up with the victim, and providing a crime alert flier to all residents of the block of the identified crime location. In addition, the NPOs developed a system to measure the success of the contacts made with each resident.

The alert flier indicates that a neighbor on their block was the recent victim of a crime and request the resident to partner with their neighbor and the Police Department by serving as our “eyes and ears” in an effort to prevent future crimes. The type of crime was purposely excluded from the flier with the expectation that it would arouse curiosity and prompt the resident to contact their NPO.

The first goal of this initiative was implementation of a new official crime/block watch, meaning that at least 50% of the residents were actively involved, received proper training and were officially recognized by the Police Department as a Crime Watch group. The second goal was to establish a “new crime watch contact,” which is defined as a resident who did not want to commit to an official block crime watch, but still wanted to take an active role in sharing information and networking with their NPO by phone and e-mail correspondence. The citizen was also encouraged to report any non-emergency crime issues or quality of life issues to their NPO.

New Contacts—March 2011 thru May 2011

- 601 Citizen Contacts
- 359 Established as Crime Watch Contacts and placed in the NPO’s email distribution list.
- 2,976 Crime Alert Fliers Distributed

Method in Obtaining Contacts:

- 126 contacts developed in response to crime alert fliers
- 178 contacts developed from victim follow-ups
- All other contacts were developed through personal contacts at some type of community service function; meetings, RAPIDS, etc.
- 192 out of the total citizen contacts could not be established as crime watch contacts due to no email address
- 209 out of the total citizen contacts had no interest in partnering
- 4 official crime watches have been implemented during this 3 month reporting period
- 16 possible crime watches are in the process of being implemented and require further NPO follow up

This initiative proved to be a success. More than 50% of the total East Division resident contacts are now receiving e-mails from their NPO and have an open line of communication, which will make it easier for residents that work full-time to stay connected.

Other Community Outreach Events

- *South Division Safety Fair*
April 30, 2011
- *Citywide Ministers Meeting*
May 12, 2011
- *East Division Community Forum*
May 26, 2011
- *Deaf & Hard of Hearing Community Forum*
June 21, 2011

